

Benennung:

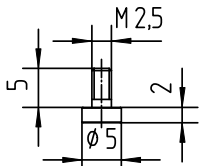
Messeinsätze

contact tips

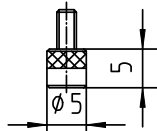
Zeichnungs-Nr.:

8658 ZA

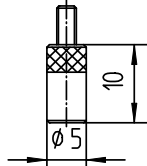
Sachnummer: 8658 ZA



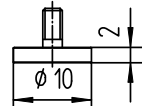
8658 A2



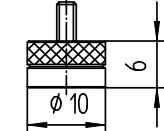
8658 A5
8658 A5 H*



8658 A10
8658 A10 H*

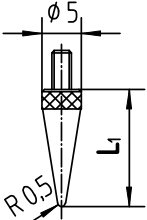


8658 G2
8658 G2 H*

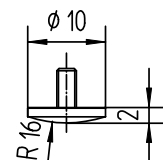


8658 G6
8658 G6 H*

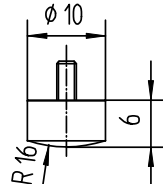
| L ₁ |
|----------------|
| 5 |
| 10 |
| 15 |
| 20 |
| 30 |
| 40 |
| 50 |



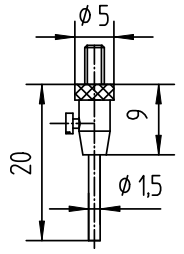
8658 R L₁



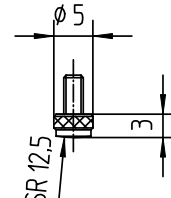
8658 D2



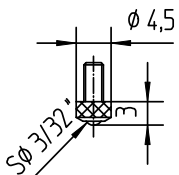
8658 D6



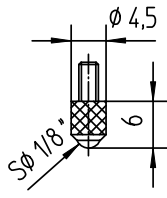
8658 I
8658 I H*



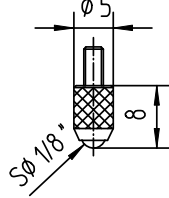
8658 F3 H*



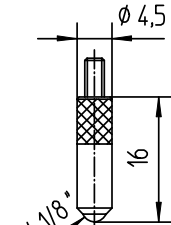
8658 B3



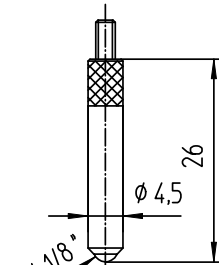
8658 B6
8658 B6 H*
8658 B6 S**
8658 B6 R***



8658 B8
8658 B8 H*

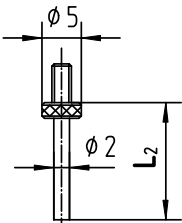


8658 B16
8658 B16 H*

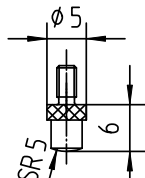


8658 B26
8658 B26 H*

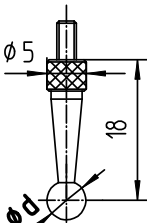
| L ₂ |
|----------------|
| 5 |
| 10 |
| 15 |
| 20 |



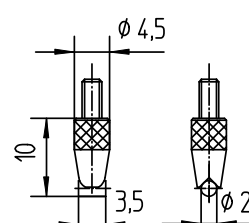
8658 J L₂



8658 M
8658 M H*

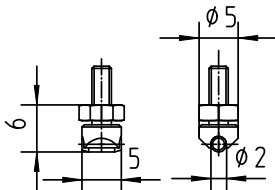


8658 K d H*

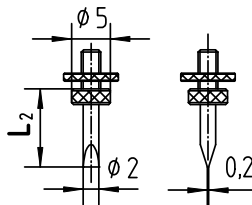


8658 L10

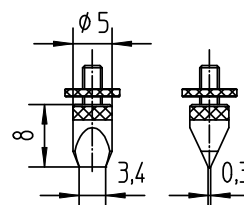
| d |
|----|
| 1 |
| 2 |
| 3 |
| 4 |
| 5 |
| 6 |
| 7 |
| 8 |
| 9 |
| 10 |
| 11 |
| 12 |



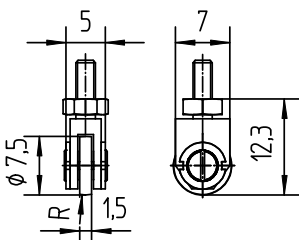
8658 L H*



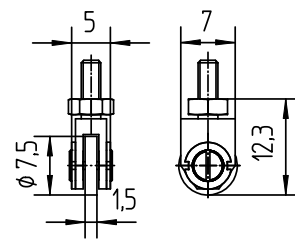
8658 S L₂



8658 T8
8658 T8 H*



8658 U B



8658 U F

*Hartmetall
*tungsten carbide

**Saphir
**sapphire

***Rubin
***rubicum

Copyrights by Kordt GmbH & Co. KG.

Schutzvermerk nach DIN 34-1 beachten

KORDT
GERMANY

| | | | | |
|-----------------|---------|--------------|---------------------------------|---------|
| Datum | Name | Maßstab 1:1 | Allgemeintoleranzen ISO 2768-mK | Blatt 1 |
| Bearb. 15.12.06 | Rechner | Format A4 ZA | CAD OneSpace Designer | 1 Bl. |
| Artikel-Gruppe | MNT | (Ers.f.) | (Ers.d.) | |