

Interruttori di manovra
sezionatori

Switch disconnectors

32 ÷ 3150 A



Switch disconnectors

GENERALITA'

VISUALCOMPACT P è una serie di interruttori di manovra sezionatori che consentono l'apertura e la chiusura di circuiti elettrici in bassa tensione.

Sono comunemente impiegati per le seguenti funzioni:

- interruttore generale
- interruttore per motori
- sezionatore
- interruttore di sicurezza

Sono disponibili 6 grandezze per 20 diversi valori di corrente nominale.

CARATTERISTICHE GENERALI

- tensione di isolamento nominale 1000V c.a. e 1500V c.c.
- disponibili 3-4-6-8 poli
- alto potere di interruzione (AC-22, AC-23, IEC 60947-3)
- elevata durata meccanica ed elettrica
- doppia interruzione per ogni fase
- contatti autopulenti
- la posizione della maniglia costituisce una indicazione positiva e affidabile della posizione dei contatti
- visibilità diretta mediante opportune feritoie, dei contatti fissi e mobili
- manovra a scatto rapido indipendente
- polo neutro con contatti ad apertura posticipata e chiusura anticipata rispetto ai contatti di fase
- disponibile versione con polo neutro passante
- neutro a piena corrente fino a 1250A di serie, a richiesta da 1600A a 3150A
- protezione adeguata per prevenire contatti accidentali
- involucro in materiali autoestinguenti (classe V0-UL94) a bassa igroscopicità, ad alta resistenza meccanica e alle correnti superficiali
- adatto per utilizzo in climi tropicali (IEC 6068-2)
- ampia gamma di accessori
- comando di tipo rotativo frontale a mezzo di: maniglia esterna a doppio isolamento con blocco porta in posizione I, grado di protezione IP65, possibilità di 3 blocchi con lucchetto in posizione 0.
- maniglia diretta (a richiesta lucchettabile in posizione 0).

GENERALITIES

VISUALCOMPACT P is a range of switch disconnectors suitable for making and breaking on load and disconnecting low voltage electrical circuits.

They are commonly used for the following purposes:

- main switch
- switch for motors
- disconnecter
- safety switch

They are available in 6 sizes and 20 current ratings.

GENERAL CHARACTERISTICS

- rated insulation voltage 1000V AC and 1500V DC
- 3-4-6-8 poles available
- high breaking capacity (AC-22, AC-23, IEC 60947-3)
- high electrical and mechanical endurance
- double break contacts
- self cleaning contacts
- contact position positively indicated by the handle
- visibility of fixed and moving contacts by means of windows
- independent manual operation
- neutral contact makes earlier and opens later than the phase contacts
- solid neutral version available
- neutral at full current until 1250 A, standard, 1600 A ÷ 3150 A on request
- suitable protection to prevent accidental touching of live parts
- casing in self-extinguishing (V0-UL94), low hygroscopic and high mechanical resistance isolating material.
- resistant to damp heat (IEC 6068-2)
- wide range of accessories
- rotary front operation by means of: external double insulated handle with door-interlock in ON position, IP65 degree of protection. Padlockable with three padlocks in OFF position
- direct handle (padlockable in OFF position on request).

CONDIZIONI NORMALI DI SERVIZIO, MONTAGGIO E TRASPORTO

- temperatura ambiente di immagazzinamento e trasporto - 25°C + 55°C
- temperatura ambiente di funzionamento - 20°C + 45°C
- in caso di temperatura ambiente (t_a) superiore, applicare la seguente formula di declassamento:

$$I_{The} = k I_{Th}$$

$$\text{dove } K = 1 - \frac{t_a - 45}{100}$$

- umidità relativa max 95 %
 - frequenza nominale 50-60Hz
 - altitudine max 2000 m s.l.m.
 - grado di inquinamento 3 secondo IEC 947-1
 - possono essere montati in qualsiasi posizione
 - montaggio in custodia:
in caso di utilizzo a piena corrente e in mancanza di adeguata ventilazione assicurare un volume pari a circa 5 volte quello dell'apparecchio.
 - tipo di servizio (secondo IEC 947-1):
8 ore; ininterrotto; intermittente 60% classe 30; temporaneo; periodico
- Per condizioni di impiego diverse consultare il costruttore.

CONFORMITA' ALLE NORME

IEC 60947-1 IEC 60947-3, CEI EN 60947-1 / CEI EN 60947-3
IEC 439-1, CEI EN 60439-1
IEC 204-1, CEI EN 60204-1
VDE 0660 Teil 107

CERTIFICATI E OMOLOGAZIONI

- KEMA
- RINA
- ENEL codice 13.32.23
- AEM-MI
- LLOYD'S REGISTER
- CESI
- IENGF

NORMAL SERVICE, MOUNTING AND TRANSPORT CONDITIONS

- storage and transport ambient temperature - 25°C + 55°C
- working ambient temperature - 20°C + 45°C
- in case of higher ambient temperature (t_a) consider the following derating formula:

$$I_{The} = k I_{Th}$$

$$K = 1 - \frac{t_a - 45}{100}$$

- relative humidity max 95%
 - rated frequency 50-60Hz
 - altitude max 2000 m a.s.l.
 - pollution degree 3 according IEC 947-1
 - can be mounted in any position
 - mounting in enclosure:
in case of utilisation at full load and without adequate ventilation, ensure a volume of about 5 times the volume of the switch.
 - duty (IEC 947-1):
eight-hour; uninterrupted; intermittent 60% class 30; temporary; periodic
- For other operating conditions contact the manufacturer.

CONFORMITY TO STANDARDS

IEC 60947-1 IEC 60947-3, CEI EN 60947-1 / CEI EN 60947-3
IEC 439-1, CEI EN 60439-1
IEC 204-1, CEI EN 60204-1
VDE 0660 Teil 107

CERTIFICATES AND APPROVALS

- KEMA
- RINA
- ENEL code 13.32.23
- AEM-MI
- LLOYD'S REGISTER
- CESI
- IENGF

Order references



Tipo Type	Corrente nominale Rated current	Senza maniglia Without handle		Maniglia blocco porta Door interlock handle	
		Poli / Poles	Codice / Code	Poli / Poles	Codice / Code
VC1P	32A	3P	11000SM	3P	11000
		4P	11010SM	4P	11010
	45A	3P	11001SM	3P	11001
		4P	11011SM	4P	11011
	63A	3P	11002SM	3P	11002
		4P	11012SM	4P	11012
	80A	3P	11003SM	3P	11003
		4P	11013SM	4P	11013
	100A	3P	11004SM	3P	11004
		4P	11014SM	4P	11014
	125A	3P	11005SM	3P	11005
		4P	11015SM	4P	11015
	160A	3P	11006SM	3P	11006
		4P	11016SM	4P	11016



VC2P	160A	3P	12001SM	3P	12001
		4P	12011SM	4P	12011
	200A	3P	12002SM	3P	12002
		4P	12012SM	4P	12012
	250A	3P	12003SM	3P	12003
		4P	12013SM	4P	12013
	315A	3P	12004SM	3P	12004
		4P	12014SM	4P	12014



VC3P	315A	3P	13001SM	3P	13001
		4P	13011SM	4P	13011
	400A	3P	13002SM	3P	13002
		4P	13012SM	4P	13012
	500A	3P	13003SM	3P	13003
		4P	13013SM	4P	13013



VC4P	630A	3P	14003SM	3P	14003
		4P	14013SM	4P	14013
	800A	3P	14004SM	3P	14004
		4P	14014SM	4P	14014

N.B. Albero di comando standard lunghezza 200 mm incluso in ogni confezione
Standard shaft length 200 mm included into the package

Tipo Type	Corrente nominale Rated current	Senza maniglia Without handle		Maniglia blocco porta Door interlock handle	
		Poli / Poles	Codice / Code	Poli / Poles	Codice / Code
VC5P (35 KA)	800A	3P	1500SM	3P	15000
		4P	15010SM	4P	15010
	1000A	3P	15001SM	3P	15001
		4P	15011SM	4P	15011
	1250A	3P	15002SM	3P	15002
		4P	15012SM	4P	15012



VC5P (50 KA)	800A	3P	15007SM	3P	15007
		4P	15017SM	4P	15017
	1000A	3P	15008SM	3P	15008
		4P	15018SM	4P	15018
	1250A	3P	15009SM	3P	15009
		4P	15019SM	4P	15019
	1600A	3P	15003SM	3P	15003
		4P	15013SM	4P	15013
	2000A	3P	15004SM	3P	15004
		4P	15014SM	4P	15014
	2500A	3P	15005SM	3P	15005
		4P	15015SM	4P	15015
	3150A	3P	15006SM	3P	15006
		4P	15016SM	4P	15016



VC6P	1600A	3P	16000SM	3P	16000
		4P	16010SM	4P	16010
	2000A	3P	16001SM	3P	16001
		4P	16011SM	4P	16011
	2500A	3P	16002SM	3P	16002
		4P	16012SM	4P	16012
	3150A	3P	16003SM	3P	16003
		4P	16013SM	4P	16013

N.B. Albero di comando standard lunghezza 200 mm incluso in ogni confezione
Standard shaft length 200 mm included into the package

* Per esecuzione quadripolare con neutro passante aggiungere "SN" al termine del codice del corrispondente sezionatore quadripolare.
For solid neutral switches add "SN" to the code of corresponding four pole switch.

* Per esecuzione quadripolare con neutro a piena corrente (già di serie fino a 1250A) aggiungere "FN" al termine del codice del corrispondente sezionatore quadripolare da 1600A in poi.
For full current switches (standard until 1250A) add "FN" to the code of corresponding four pole switch from 1600A onward.

Dati tecnici

Technical data

Tipo / type				VC1P								VC2P			
Corrente nominale / Rated current (In)				32A	45A	63A	80A	100A	125A	160A	160A	200A	250A	315A	
Tensione nominale d'isolamento Rated insulation voltage	c.a./AC	(Ui)	(V)	1000	1000	1000	1000	1000	1000	1000	1000	1000	1000	1000	
	c.c./DC	(Ui)	(V)	1500	1500	1500	1500	1500	1500	1500	1500	1500	1500	1500	
Tensione nominale impulso Impulse withstand voltage		(U imp)	(kV)	8	8	8	8	8	8	8	12	12	12	12	
Corrente nominale termica Rated thermal current		(Ith)	(A)	32	45	63	80	100	125	160	160	200	250	315	
Corrente nominale d'impiego (Ie) Rated operational current	AC-21A/B	400V	(A)	32	45	63	80	100	125	125/160	160	200	250	250/315	
		500V	(A)	32	45	63	80	100	125	125/160	160	200	250	250/315	
		690V	(A)	32	45	63	80	100	125	125/160	160	200	250	250/315	
AC-22A/B	400V	(A)	32	45	63	80	100	125	125/160	160	200	250	250/315		
	500V	(A)	32	45	63	80	100	125	125/125	160	200	250	250/250		
	690V	(A)	32	45	63	80	100	125	125/125	160	200	250	250/250		
AC-23A/B	400V	(A)	32	45	63	80	100	125	125/125	160	200	250	250/250		
	500V	(A)	25	35	45	63	80	100	100/100	125	160	200	200/200		
	690V	(A)	20	30	35	45	63	80	80/80	100	125	160	160/160		
DC-21A/B(1)	220V	(A)	32	45	63	80	100	125	125/160	160	200	250	250/315		
	420V	(A)	-	-	-	-	-	-	-	160	200	250	250/315		
	560V	(A)	-	-	-	-	-	-	-	-	-	-	-		
DC-22A/B(1)	220V	(A)	32	45	63	80	100	125	125/125	160	200	250	250/315		
	420V	(A)	-	-	-	-	-	-	-	160	200	250	250/250		
	560V	(A)	-	-	-	-	-	-	-	-	-	-	-		
DC-23A/B(1)	220V	(A)	20	30	35	45	63	80	80/80	160	200	250	250/250		
	420V	(A)	-	-	-	-	-	-	-	160	200	250	250/250		
	560V	(A)	-	-	-	-	-	-	-	-	-	-	-		
Potere di chiusura a 400V AC23 Rated making capacity at 400V AC23		(A)	320	450	630	800	1000	1250	1250	1600	2000	2500	2500		
Potere di interruzione a 400V AC23 Rated breaking capacity at 400V AC23		(A)	256	360	504	640	800	1000	1000	1280	1600	2000	2000		
Corrente di breve durata per 1 sec. Short-circuit withstand current 1 sec.		(kA)	5	5	5	5	5	5	5	8	8	8	8		
Corrente di breve durata per 0,25 sec. Short-circuit withstand current 0,25 sec.		(kA)	10	10	10	10	10	10	10	16	16	16	16		
Potere di chiusura in corto circuito Short-circuit making capacity		(400V)	(kA)	7,5	7,5	7,5	7,5	7,5	7,5	13,5	13,5	13,5	13,5		
Potenza nominale d'impiego AC-23A Rated operational power AC-23A		(400V)	(Kw)	17	23	33	42	52	65	65	85	105	130		
Corrente di corto circuito condizionata da fusibile Rated fuse short-circuit current															
Tipo fusibile / Back up fuse		(A)	32	45	63	80	100	125	125	160	200	250	250		
Valore efficace / R.M.S. value		(kA)	100	100	100	100	50	50	50	100	100	50	50		
Valore di picco / Peak value		(kA)	6	9	10	12	12	15	15	20	20	25	25		
Durata meccanica / Mechanical endurance		n°	12000	12000	12000	12000	12000	10000	10000	10000	10000	10000	10000		
Durata elettrica / Electrical endurance		n°	3000	3000	3000	3000	3000	2000	2000	2000	2000	2000	2000/200		
Potenza condensatori a 400V Rated capacitor power at 400V		kVAR	15	20	30	40	45	50	50	70	90	110	110		
Potenza dissipata per polo Power losses for pole		(W)	0,1	0,2	0,4	0,7	1,1	1,7	2,7	1,6	2,4	3,8	6,0		
Dimensione cavo / Cable section		mmq	50	50	50	50	50	50	70	120	120	120	185		
Dimensione barre / Bars dimension		mm	16x3	16x3	16x3	16x3	16x3	16x3	16x4	20x5	20x5	20x5	20x5		
Sforzi di manovra / Operation torque		Nm	8	8	8	8	8	8	8	12	12	12	12		
Peso netto / Net weight		3P	kg	0,9	0,9	0,9	0,9	0,9	0,9	1,5	1,5	1,5	1,5		
		4P	kg	1	1	1	1	1	1	1,6	1,6	1,6	1,6		

	VC3P			VC4P		VC5P			VC5P 50 kA							VC6P			
	315A	400A	500A	630A	800A	800A	1000A	1250A	800A	1000A	1250A	1600A	2000A	2500A	3150A	1600A	2000A	2500A	3150A
	1000	1000	1000	1000	1000	1000	1000	1000	1000	1000	1000	1000	1000	1000	1000	1000	1000	1000	1000
	1500	1500	1500	1500	1500	1500	1500	1500	1500	1500	1500	1500	1500	1500	1500	1500	1500	1500	1500
	12	12	12	12	12	12	12	12	12	12	12	12	12	12	12	12	8	8	8
	315	400	500	630	800	800	1000	1250	800	1000	1250	1600	2000	2500	3150	1600	2000	2500	3150
	315	400	400/500	630	630/800	800	1000	1250	800	1000	1250	1600	2000	2500	3150	1600	2000	2500	3150
	315	400	400/500	630	630/800	800	1000	1250	800	1000	1250	1250	1600	2000	2500	1600	2000	2500	3150
	315	400	400/500	630	630/800	800	1000	1250	800	1000	1250	1250	1250	1250	1250	1250	1250	1250	1250
	315	400	400/500	630	630/800	800	1000	1250	800	1000	1250	1250	1250	-	-	1600	2000	2500	1600
	315	400	400/400	630	630/630	800	1000	1250	800	1000	1250	-	-	-	-	1250	1250	1250	-
	315	400	400/400	630	630/630	800	1000	1250	800	1000	1250	-	-	-	-	1250	1250	-	-
	250	315	315/315	500	500/500	800	800	800	630	800	1000	-	-	-	-	800	800	-	-
	200	250	250/250	400	400/400	400	400	400	500	630	800	-	-	-	-	400	400	-	-
	315	400	400/500	630	630/800	800	1000	1250	800	1000	1250	1600	2000	-	-	1600	2000	-	-
	315	400	400/500	630	630/800	-	-	-	-	-	-	-	-	-	-	-	-	-	-
	315	400	400/500	630	630/800	-	-	-	-	-	-	-	-	-	-	-	-	-	-
	315	400	400/500	630	630/800	800	1000	1250	800	1000	1250	-	-	-	-	-	-	-	-
	315	400	400/400	630	630/630	-	-	-	-	-	-	-	-	-	-	-	-	-	-
	315	400	400/400	630	630/630	-	-	-	-	-	-	-	-	-	-	-	-	-	-
	315	400	400/400	630	630/630	500	630	800	500	630	800	-	-	-	-	-	-	-	-
	315	400	400/400	630	630/630	-	-	-	-	-	-	-	-	-	-	-	-	-	-
	315	400	400/400	630	630/630	-	-	-	-	-	-	-	-	-	-	-	-	-	-
	3150	4000	4000	6300	6300	8000	10000	12500	8000	10000	12500	-	-	-	-	12500	12500	-	-
	2520	3200	3200	5040	5040	6400	8000	10000	6400	8000	10000	-	-	-	-	10000	1000	-	-
	13	13	13	26,5	26,5	35	35	35	50	50	50	50	50	50	50	60	60	70	70
	26	26	26	53	53	70	70	70	100	100	100	100	100	100	100	120	120	140	140
	26	26	26	30	30	73,5	73,5	73,5	105	105	105	105	105	105	105	105	105	105	105
	165	210	210	330	330	420	525	630	420	525	630	630	630	-	-	630	630	-	-
	315	400	400	630	630	800	1000	1000	800	1000	1000	-	-	-	-	-	-	-	-
	50	50	50	50	50	100	100	100	100	100	100	-	-	-	-	-	-	-	-
	25	30	30	40	40	70	90	100	70	90	100	-	-	-	-	-	-	-	-
	8000	8000	8000	8000	8000	7000	7000	7000	4000	4000	4000	4000	4000	2000	2500	4000	2500	2500	2500
	1500	1500	1500/200	1500	1500/200	1000	1000	1000	1000	1000	1000	500	500	500	500	1000	500	500	500
	140	180	180	300	300	380	475	600	380	475	600	-	-	-	-	780	850	1100	1250
	5,9	9,4	14,8	15,6	25,7	17,5	27,3	12,7	15,6	24,3	38,0	38,3	61,3	91,7	145,5	47,8	74,7	85,4	118,1
	240	240	240	2x185	2x240	2x240	-	-	2x240	-	-	-	-	-	-	-	-	-	-
	2x25x5	2x25x5	2x25x5	2x32x6	2x40x6	2x50x5	2x50x6	2x50x8	2x50x5	2x50x6	2x50x8	3x50x8	3x50x12	4x50x12	6x50x12	2x80x10	2x80x10	3x80x10	3x100x10
	18	18	18	34	34	45	45	45	70	70	70	70	70	70	70	70	70	70	70
	3,5	3,5	3,5	5,5	5,5	11	11	11	11	11	11	18	18	25	25	17	19	27	40
	3,8	3,8	3,8	6	6	12	12	12	12	12	12	19,2	19,5	26,5	26,5	19	20	30	41

VC1P 32 ÷ 160 A

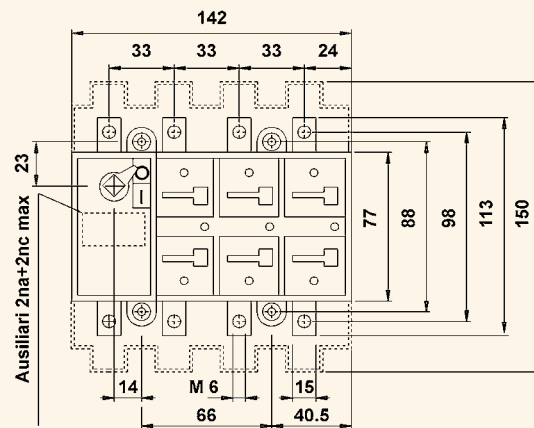
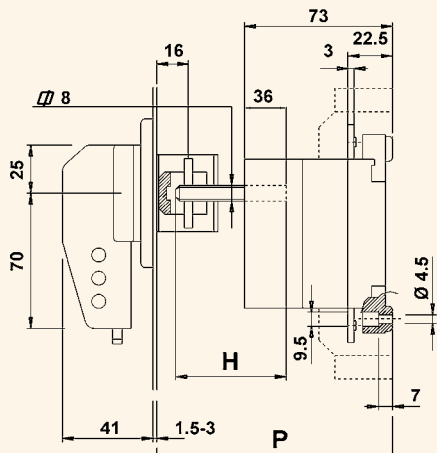
Legenda / Caption

P		C	H
min	max		
116	247	47	P-C

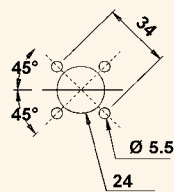
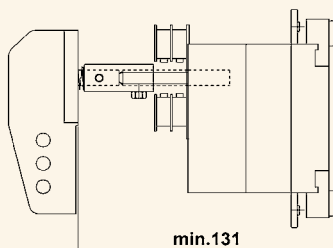
C = costante / constant



VC1P maniglia blocco porta - door interlock handle



VC1P maniglia diretta - direct handle



Foratura portella
Door drilling

VC2P 160 ÷ 315 A

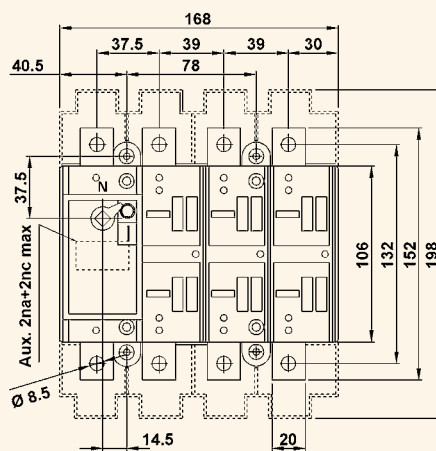
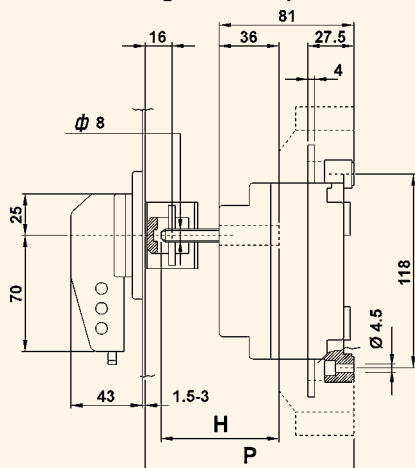
Legenda / Caption

P		C	H
min	max		
124	255	55	P-C

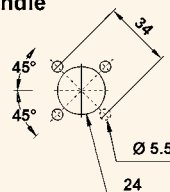
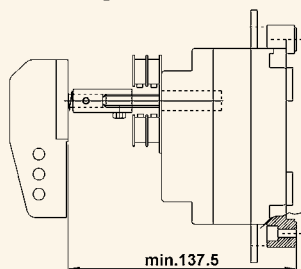
C = costante / constant



VC2P maniglia blocco porta - door interlock handle

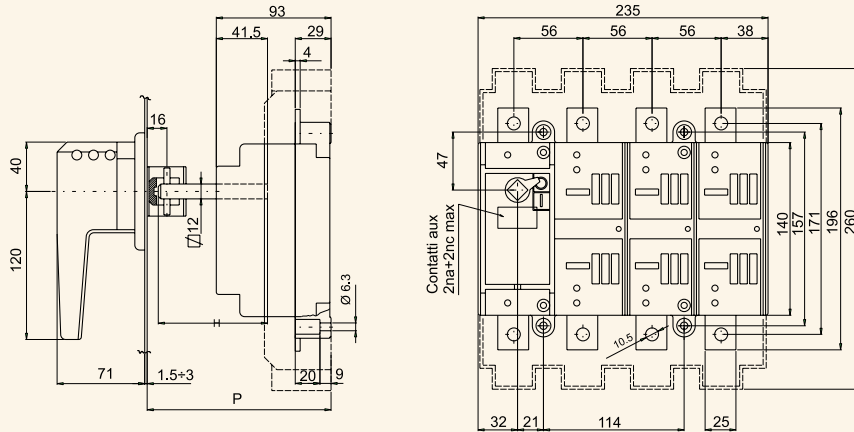


VC2P maniglia diretta - direct handle

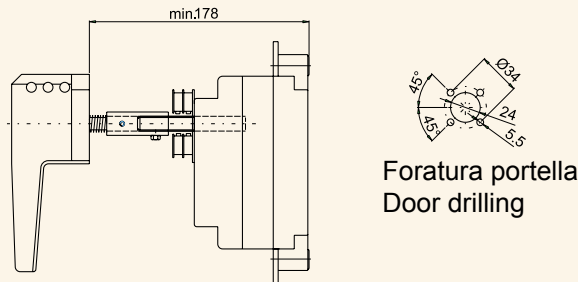


Foratura portella
Door drilling

VC3P maniglia blocco porta - door interlock handle



VC3P maniglia diretta - direct handle



VC3P 315 - 500 A

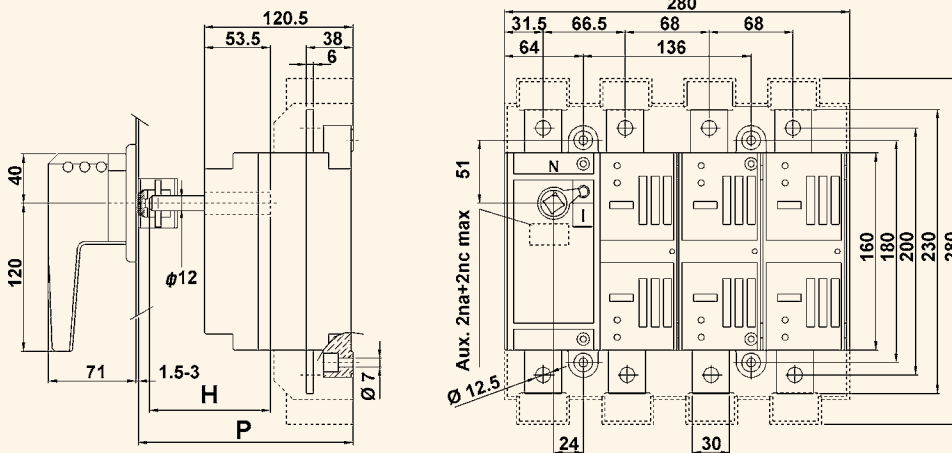
Legenda / Caption

P		C	H
min	max		
148	261,5	51,5	P-C

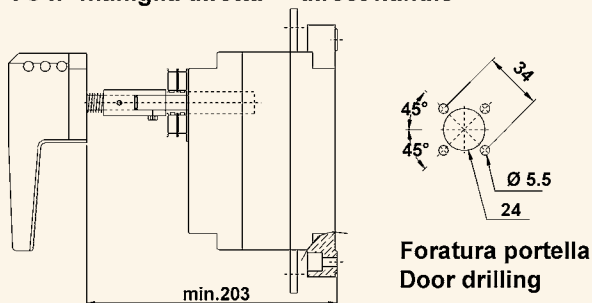
C = costante / constant



VC4P maniglia blocco porta - door interlock handle



VC4P maniglia diretta - direct handle



VC4P 630 - 800 A

Legenda / Caption

P		C	H
min	max		
174	276	76	P-C

C = costante / constant



Dimensioni

Dimensions

VC5P 800 ÷ 1250 A 35 kA

Legenda / Caption

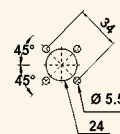
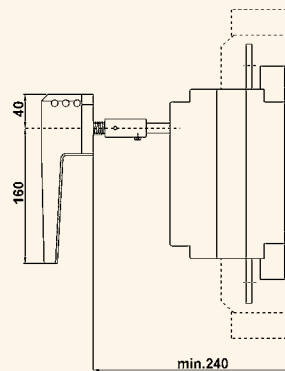
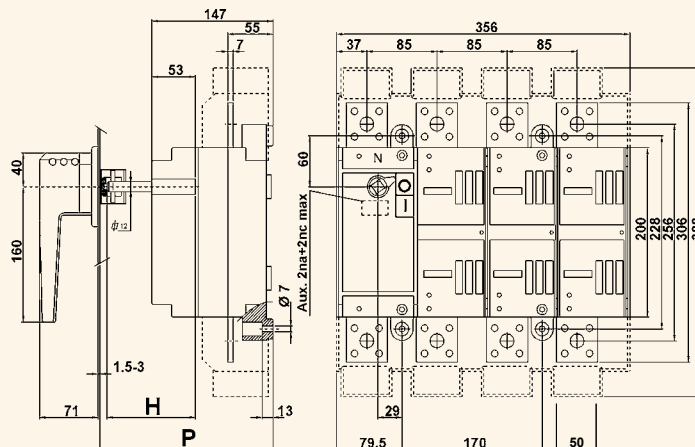
P		C	H
min	max		
215	296	96	P-C

C = costante / constant



Maniglia blocco porta
Door interlock handle

Maniglia diretta
Direct handle



Foratura portella
Door drilling

VC5P 800 ÷ 1250 A 50 kA

Legenda / Caption

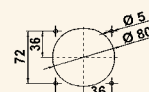
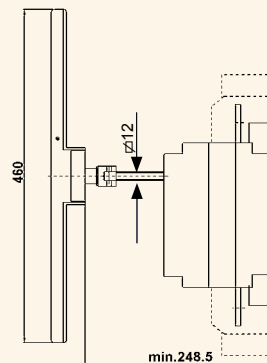
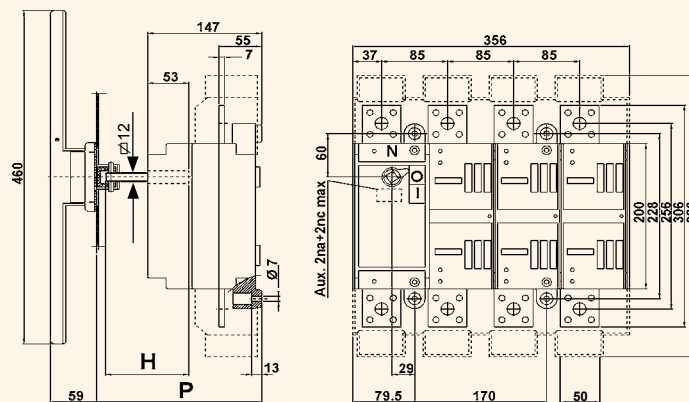
P		C	H
min	max		
213	306	106	P-C

C = costante / constant



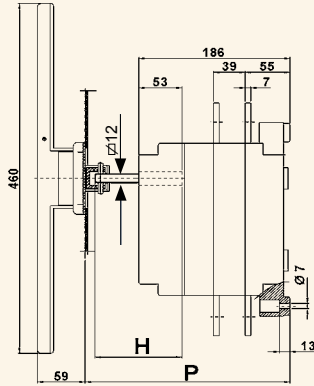
Maniglia blocco porta
Door interlock handle

Maniglia diretta
Direct handle

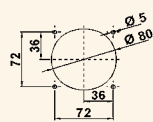
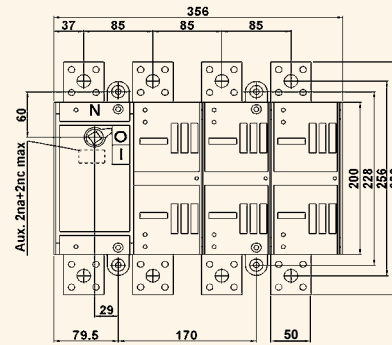
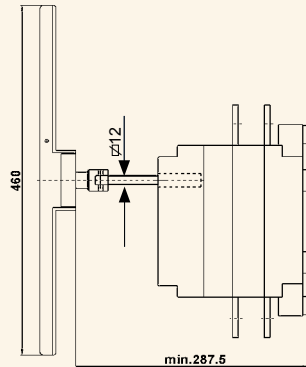


Foratura portella
Door drilling

VC5P 1600 - 2000
- maniglia blocco porta
- door interlock handle



VC5P 1600 - 2000
- maniglia diretta
- direct handle



Foratura portella
Door drilling

VC5P 1600 - 2000 A

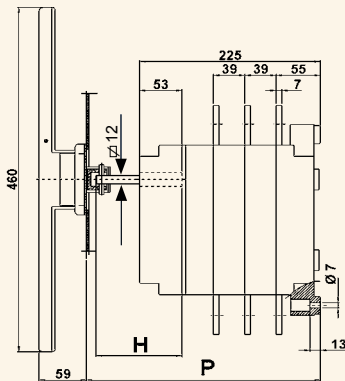
Legenda / Caption

P		C	H
min	max		
252	345	145	P-C

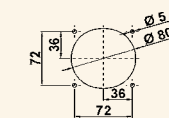
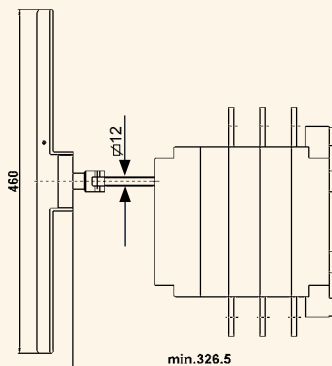
C = costante / constant



VC5P 2500 - 3150
- maniglia blocco porta
- door interlock handle



VC5P 2500 - 3150
- maniglia diretta
- direct handle



Foratura portella
Door drilling

VC5P 2500 - 3150 A

Legenda / Caption

P		C	H
min	max		
291	384	184	P-C

C = costante / constant



VC6P 1600 A

Legenda / Caption

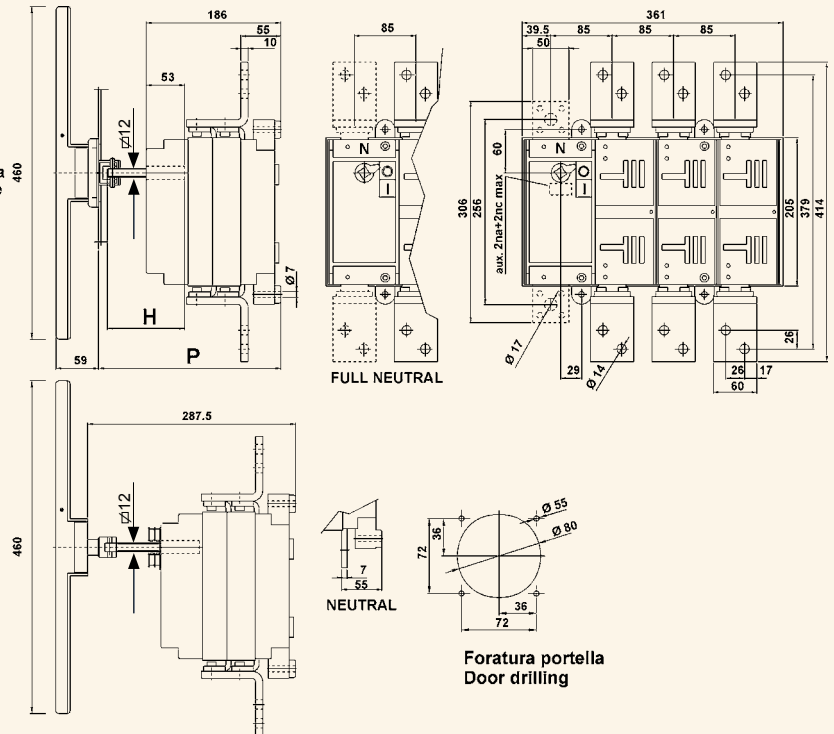
P		C	H
min	max		
252	345	145	P-C

C = costante / constant



VC6P 1600
- maniglia blocco porta
- door interlock handle

VC6P 1600
- maniglia diretta
- direct handle



VC6P 2000 A

Legenda / Caption

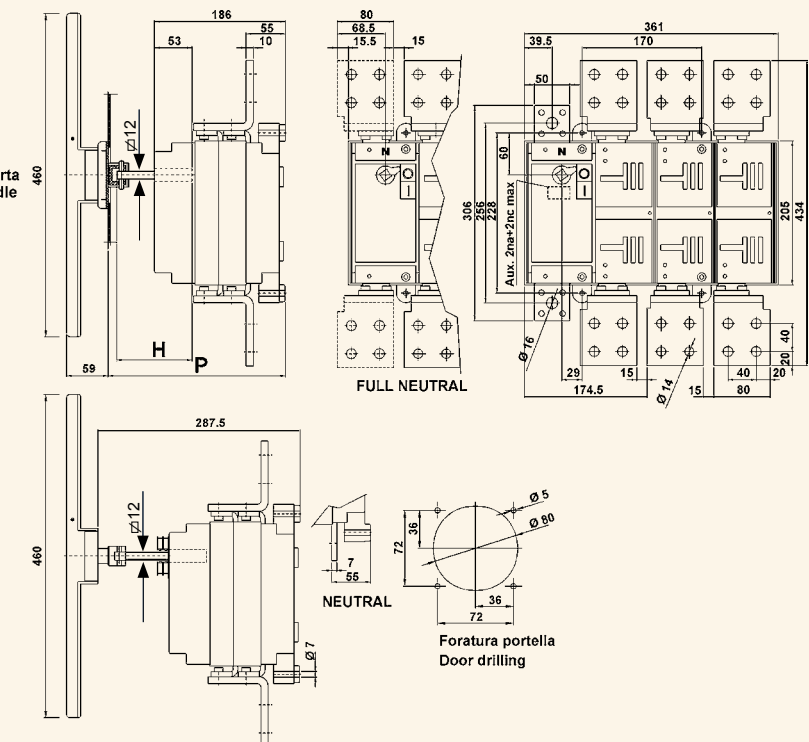
P		C	H
min	max		
252	345	145	P-C

C = costante / constant



VC6P 2000
- maniglia blocco porta
- door interlock handle

VC6P 2000
- maniglia diretta
- direct handle



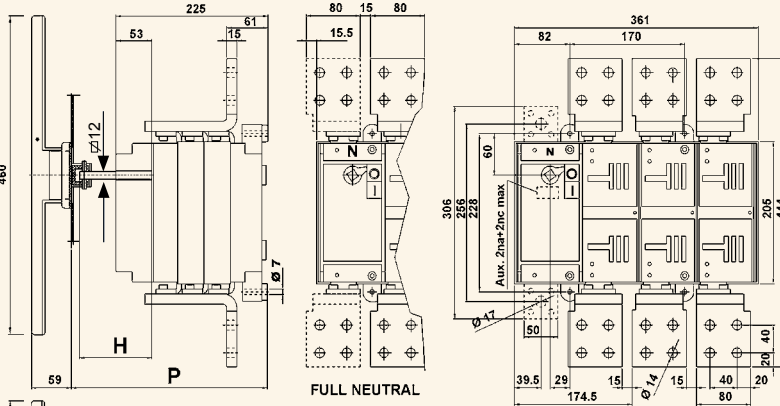
VC6P 2500 A

Legenda / Caption

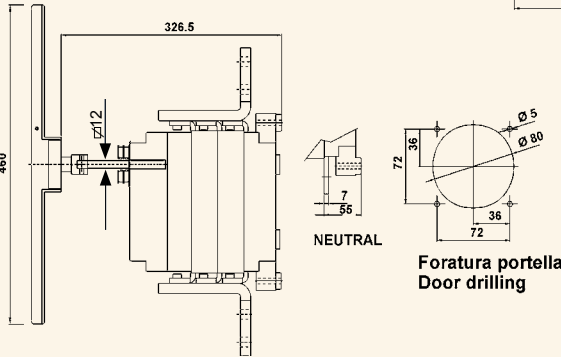
P		C	H
min	max		
291	384	184	P-C

C = costante / constant

VC6P 2500
- maniglia blocco porta
- door interlock handle



VC6P 2500
- maniglia diretta
- direct handle



Foratura portella
Door drilling



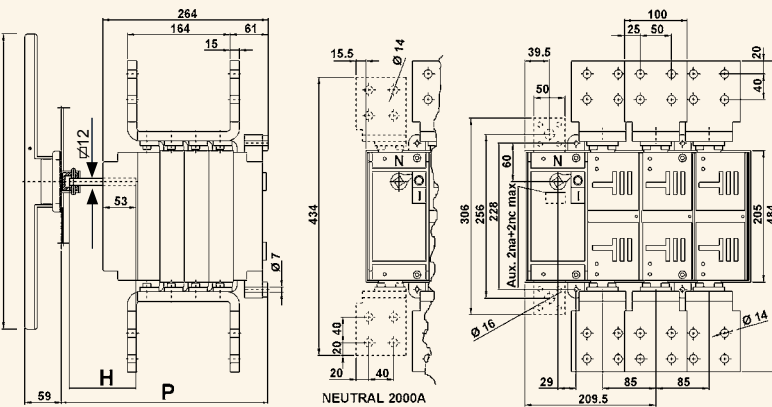
VC6P 3150 A

Legenda / Caption

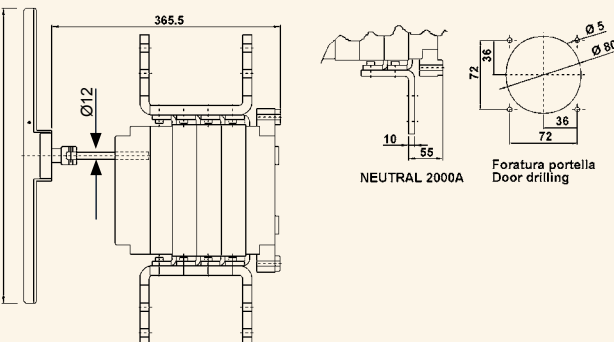
P		C	H
min	max		
330	423	223	P-C

C = costante / constant

VC6P 3150
- maniglia blocco porta
- door interlock handle



VC6P 3150
- maniglia diretta
- direct handle



Foratura portella
Door drilling



6 - 8 poli

6 - 8 poles

EOP

Orizzontale
Horizontal



Generalità

Gli interruttori 6-8 poli della serie **VISUALCOMPACT P** sono ottenuti da due sezionatori standard (vedi caratteristiche VCP) interbloccati orizzontalmente.

Sono disponibili in 16 valori di corrente nominale nelle versioni:

- già assemblato su apposite barre di sostegno
- in kit (completo di maniglia)

Generalities

The range of 6-8 poles switches **VISUALCOMPACT P** are made by two standard switches (see characteristics VCP) horizontally interlocked.

They are available in 16 current ratings in the following versions:

- already assembled on proper fixing bars
- in kit (handle included)

Tipo Type	Corrente nominale Rated current	Senza maniglia Without handle		Maniglia blocco porta Door interlock handle	
		Poli / Poles	Codice / Code	Poli / Poles	Codice / Code
EO1P	32A	6P	110006SM	6P	110006
		8P	110106SM	8P	110106
	45A	6P	110016SM	6P	110016
		8P	110116SM	8P	110116
	63A	6P	110026SM	6P	110026
		8P	110126SM	8P	110126
	80A	6P	110036SM	6P	110036
		8P	110136SM	8P	110136
	100A	6P	110046SM	6P	110046
		8P	110146SM	8P	110146
	125A	6P	110056SM	6P	110056
		8P	110156SM	8P	110156
160A	6P	110066SM	6P	110066	
	8P	110166SM	8P	110166	
EO2P	160A	6P	120016SM	6P	120016
		8P	120116SM	8P	120116
	200A	6P	120026SM	6P	120026
		8P	120126SM	8P	120126
	250A	6P	120036SM	6P	120036
		8P	120136SM	8P	120136
	315A	6P	120046SM	6P	120046
		8P	120146SM	8P	120146
EO3P	315A	6P	130016SM	6P	130016
		8P	130116SM	8P	130116
	400A	6P	130026SM	6P	130026
		8P	130126SM	8P	130126
	500A	6P	130036SM	6P	130036
		8P	130136SM	8P	130136
EO4P	630A	6P	140036SM	6P	140036
		8P	140136SM	8P	140136
	800A	6P	140046SM	6P	140046
		8P	140146SM	8P	140146
EO5P (35 kA)	800A	6P	150006SM	6P	150006
		8P	150106SM	8P	150106
	1000A	6P	150016SM	6P	150016
		8P	150116SM	8P	150116
	1250A	6P	150026SM	6P	150026
		8P	150126SM	8P	150126

* Possibilità di esecuzione per EO con fusibili.
Version for EO with fuses available.

Generalità

Gli interruttori 6-8 poli della serie **VISUALCOMPACT P** sono ottenuti da due sezionatori standard (vedi caratteristiche VCP) interbloccati verticalmente. Sono disponibili in 16 valori di corrente nominale nelle versioni:
- già assemblato su apposite barre di sostegno
- in kit (completo di maniglia)

Generalities

The range of 6-8 poles switches **VISUALCOMPACT P** are made by two standard switches (see characteristics VCP) vertically interlocked. They are available in 16 current ratings in the following versions:
- already assembled on proper fixing bars
- in kit (handle included)

ECP
Verticale
Vertical



Tipo Type	Corrente nominale Rated current	Senza maniglia Without handle		Maniglia blocco porta Door interlock handle	
		Poli / Poles	Codice / Code	Poli / Poles	Codice / Code
EC1P	32A	6P	110004SM	6P	110004
		8P	110104SM	8P	110104
	45A	6P	110014SM	6P	110014
		8P	110114SM	8P	110114
	63A	6P	110024SM	6P	110024
		8P	110124SM	8P	110124
	80A	6P	110034SM	6P	110034
		8P	110134SM	8P	110134
	100A	6P	110044SM	6P	110044
		8P	110144SM	8P	110144
	125A	6P	110054SM	6P	110054
		8P	110154SM	8P	110154
160A	6P	110064SM	6P	110064	
	8P	110164SM	8P	110164	
EC2P	160A	6P	120014SM	6P	120014
		8P	120114SM	8P	120114
	200A	6P	120024SM	6P	120024
		8P	120124SM	8P	120124
	250A	6P	120034SM	6P	120034
		8P	120134SM	8P	120134
	315A	6P	120044SM	6P	120044
		8P	120144SM	8P	120144
EC3P	315A	6P	130014SM	6P	130014
		8P	130114SM	8P	130114
	400A	6P	130024SM	6P	130024
		8P	130124SM	8P	130124
	500A	6P	130034SM	6P	130034
		8P	130134SM	8P	130134
EC4P	630A	6P	140034SM	6P	140034
		8P	140134SM	8P	140134
	800A	6P	140044SM	6P	140044
		8P	140144SM	8P	140144
EC5P (35 kA)	800A	6P	150004SM	6P	150004
		8P	150104SM	8P	150104
	1000A	6P	150014SM	6P	150014
		8P	150114SM	8P	150114
	1250A	6P	150024SM	6P	150024
		8P	150124SM	8P	150124

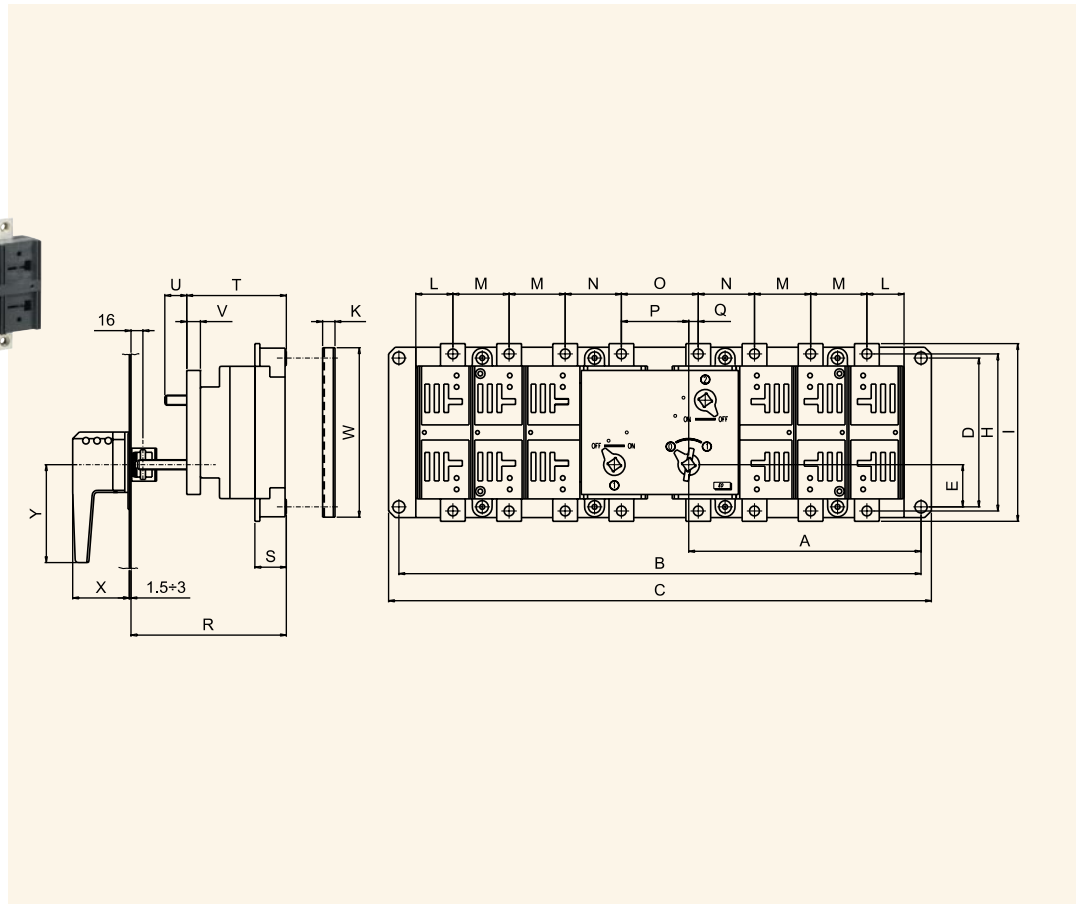
* Possibilità di esecuzione per EC con fusibili.
Version for EC with fuses available.

Dimensioni

Dimensions

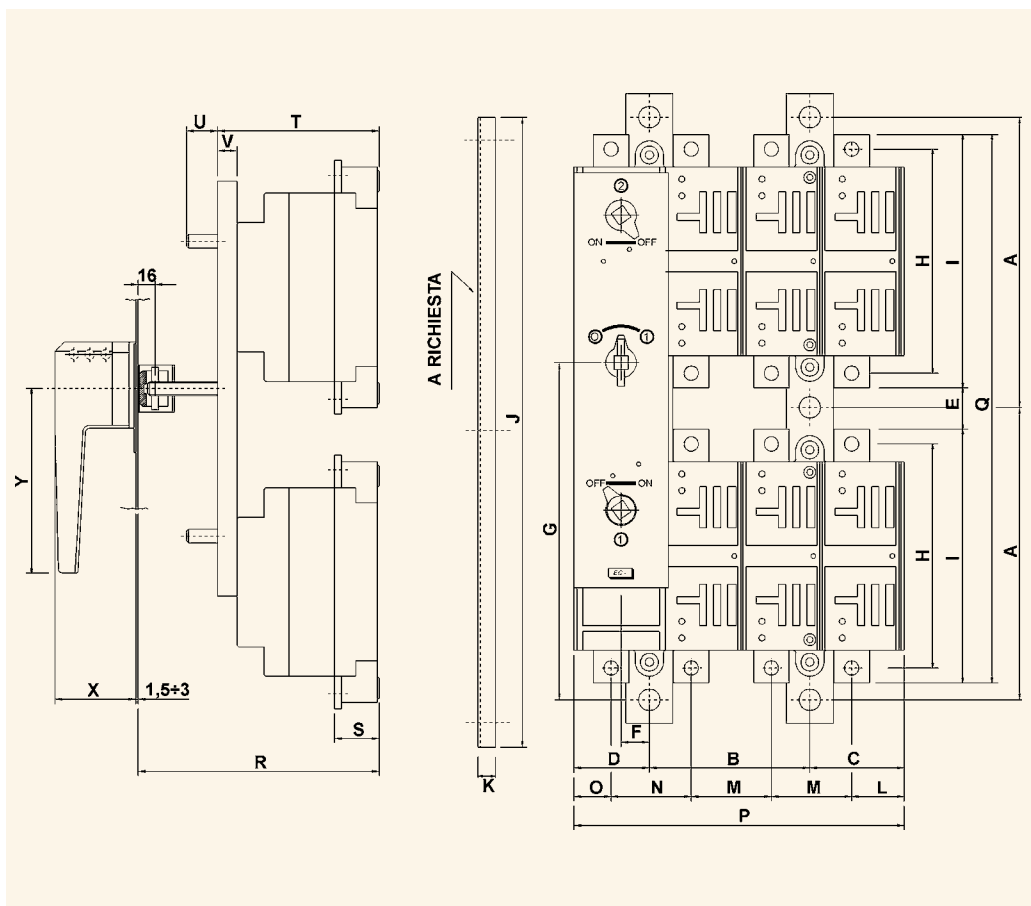
EOP

Orizzontale
Horizontal



Tipo / type	A	B	C	D	E	F	G	H	I	J	K	L	M	N	O	P	Q	R	S	T	U	V	W	X	Y
EO1P 32 ÷ 160A	131	46,5	48,5	88	43,5	159	316	98	113	262	10	24	33	33	70	35	35	161	22,5	90	20	15	20	71	120
EO2P 160 ÷ 315A	157,5	66,5	66	118	59	182	359	132	152	315	10	30	39	37,5	68	34	34	170	27,5	96	20	15	20	71	120
EO3P 315 ÷ 500A	199,5	-	64	157	47	-	490,5	171	196	460	10	38	56	56	78,5	66	12,5	183,5	29	109,5	30,5	16,5	20	71	120
EO4P 630 ÷ 800A	261	-	58	180	51	-	680	200	230	655	15	46	68	66,5	93	81,5	11,5	207	38	137	24	16,5	20,6	71	160
EO5P 800 ÷ 1250A	322	-	89	228	80	-	744	256	306	719	15	64	85	85	106	90	16	236	55	163,5	36	16,5	25,4	71	160

ECP
Verticale
Vertical



Tipo / type	A	B	C	D	E	F	G	H	I	J	K	L	M	N	O	P	Q	R	S	T	U	V	X	Y
EC1P 32 ÷ 160A	131	66	40,5	39	27	14	152	98	113	282	10	24	33	33	22	145,5	253	174	21	90	20	15	71	120
EC2P 160 ÷ 315A	157,5	78	49,5	40,5	23	14,5	179	130	147	335	10	30	39	37,5	22,5	168	317	182	29,5	96	20	15	71	120
EC3P 315 ÷ 500A	230	114	68	56	44	21	261,5	171	196	480	10	38	56	56	32	235	436	202,5	31	109,5	30,5	16,5	71	120
EC4P 630 ÷ 800A	235	136	80	64	20	24	254	200	230	490	15	46	68	66,5	31,5	280	480	227	42	137	24	16,5	71	160
EC5P 800 ÷ 1250A	319	170	106,5	79,5	84	29	353	246	286	658	15	64	85	85	37	356	676	253	52,5	163,5	36	36	71	160

Con dispositivo di apertura

With tripping device

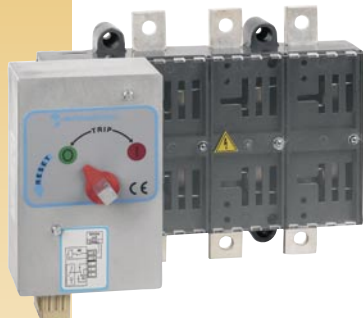
VISUALCOMPACT PBA

Generalità

Gli interruttori della serie **VISUALCOMPACT PBA** sono una serie di interruttori a 3 - 4 poli con comando manuale, corredati di un comando di apertura locale per mezzo di maniglia e a distanza tramite bobina a lancio di corrente alimentata dall'esterno.

Generalities

The switch disconnectors **VISUALCOMPACT PBA** are three or four poles manually operated and are supplied with a remote tripping device by means of a current shot coil.



Codici per l'ordinazione Order references

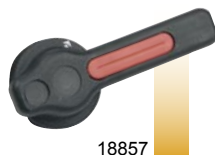
Tipo Type	Corrente nominale Rated current	V aux. bobina V aux coil									
		24 V c.c. / DC		48 V c.c. / DC		110 V c.c. / DC		110 V c.a. / AC		220 V c.a. / AC	
		Poli - Poles									
		3	4	3	4	3	4	3	4	3	4
VC4P BA	400 A	14002B	14012B	14002B1	14012B1	14002B2	14012B2	14002B3	14012B3	14002B4	14012B4
	630 A	14003B	14013B	14003B1	14013B1	14003B2	14013B2	14003B3	14013B3	14003B4	14013B4
	800 A	14004B	14014B	14004B1	14014B1	14004B2	14014B2	14004B3	14014B3	14004B4	14014B4
VC5P BA 35 kA	800 A	15000B	15010B	15000B1	15010B1	15000B2	15010B2	15000B3	15010B3	15000B4	15010B4
	1000 A	15001B	15011B	15001B1	15011B1	15001B2	15011B2	15001B3	15011B3	15001B4	15011B4
	1250 A	15002B	15012B	15002B1	15012B1	15002B2	15012B2	15002B3	15012B3	15002B4	15012B4
VC5P BA 50 kA	800 A	15007B	15017B	15007B1	15017B1	15007B2	15017B2	15007B3	15017B3	15007B4	15017B4
	1000 A	15008B	15018B	15008B1	15018B1	15008B2	15018B2	15008B3	15018B3	15008B4	15018B4
	1250 A	15009B	15019B	15009B1	15019B1	15009B2	15019B2	15009B3	15019B3	15009B4	15019B4
	1600 A	15004B	15013B	15003B1	15013B1	15003B2	15013B2	15003B3	15013B3	15003B4	15013B4
	2000 A	15003B	15014B	15004B1	15014B1	15004B2	15014B2	15004B3	15014B3	15004B4	15014B4
VC6P BA	1600 A	16000B	16010B	16000B1	16010B1	16000B2	16010B2	16000B3	16010B3	16000B4	16010B4
	2000 A	16001B	16011B	16001B1	16011B1	16001B2	16011B2	16001B3	16011B3	16001B4	16011B4

Tipo di maniglia Handle type	Maniglia blocco porta Door interlock handle	Maniglia diretta Direct handle
150 (mm)	18856	18857

Prolunga albero di comando Extension shaft	Codice Code
100 (mm)	18032

200 (mm)	18035
----------	-------

300 (mm)	18038
----------	-------

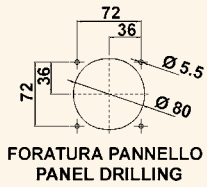
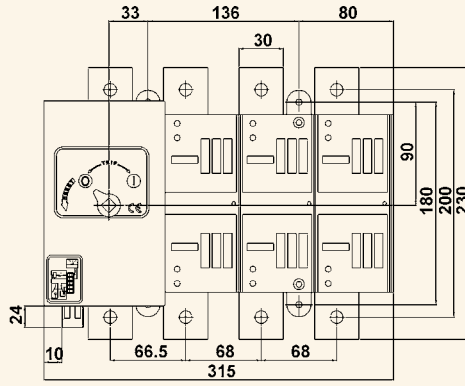
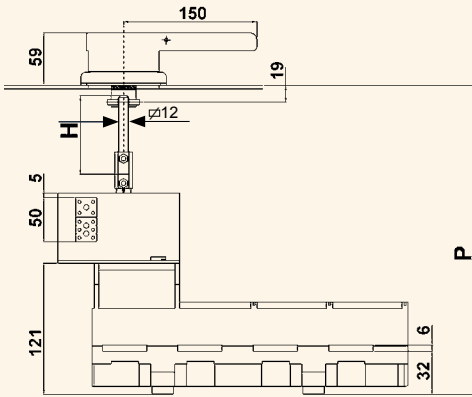


VC4P BA 400 ÷ 630 A

Legenda / Caption

P		C	H
min	max		
236,5	536,5	236,5	P-C

C = costante / constant

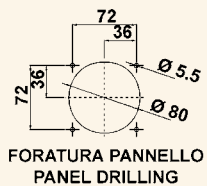
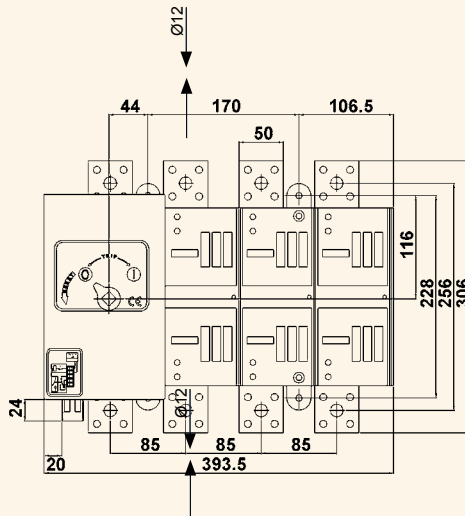
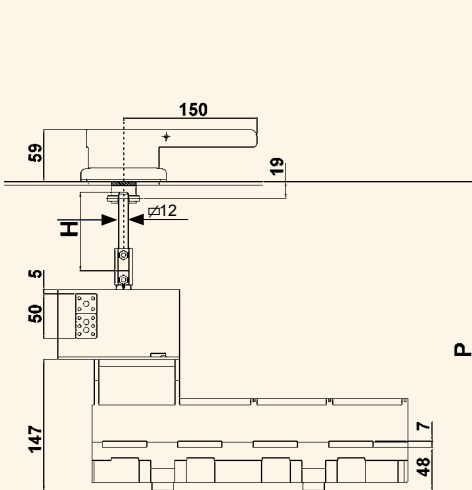


VC5P BA 800 ÷ 1250 A

Legenda / Caption

P		C	H
min	max		
259	559	259	P-C

C = costante / constant



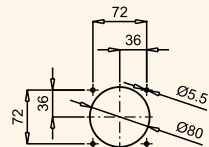
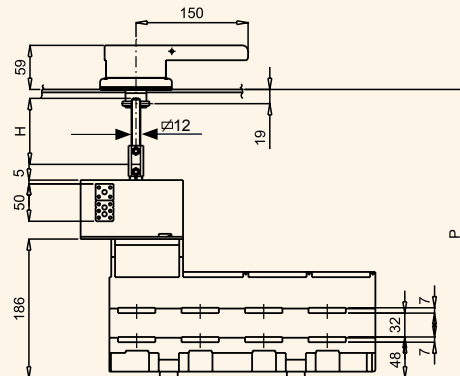
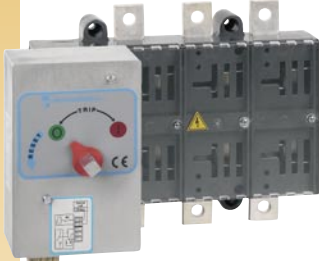
Dimensioni Dimensions

VC5P BA 1600 ÷ 2000 A

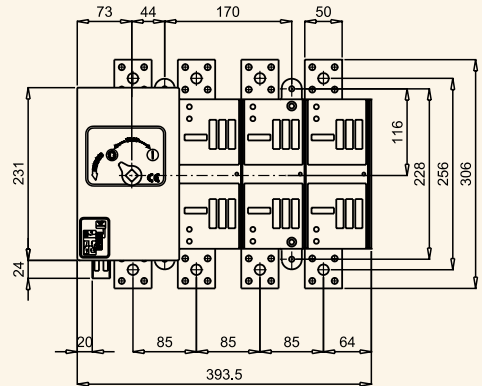
Legenda / Caption

P		C	H
min	max		
259	559	259	P-C

C = costante / constant



Foratura pannello
Panel drilling

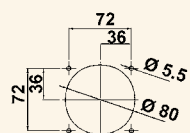
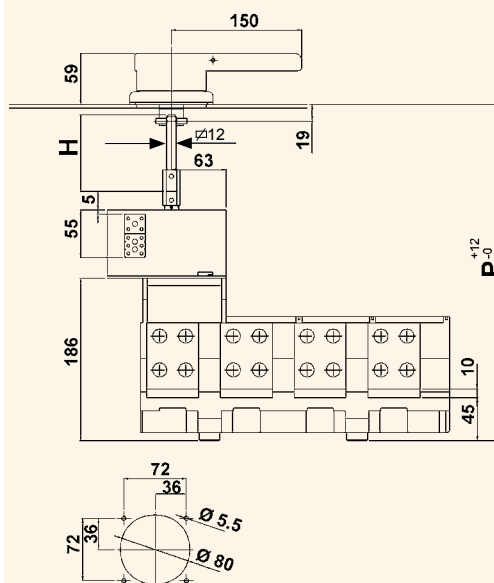


VC6P BA 1600 A

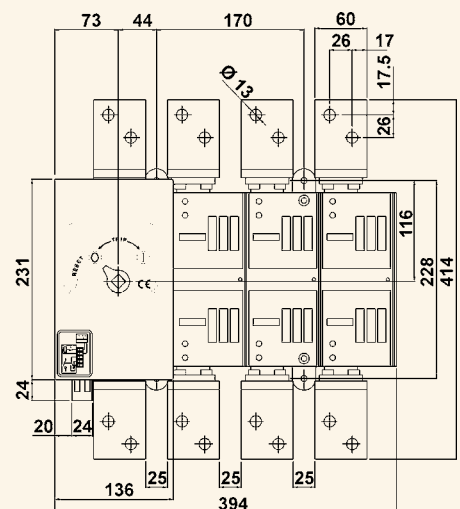
Legenda / Caption

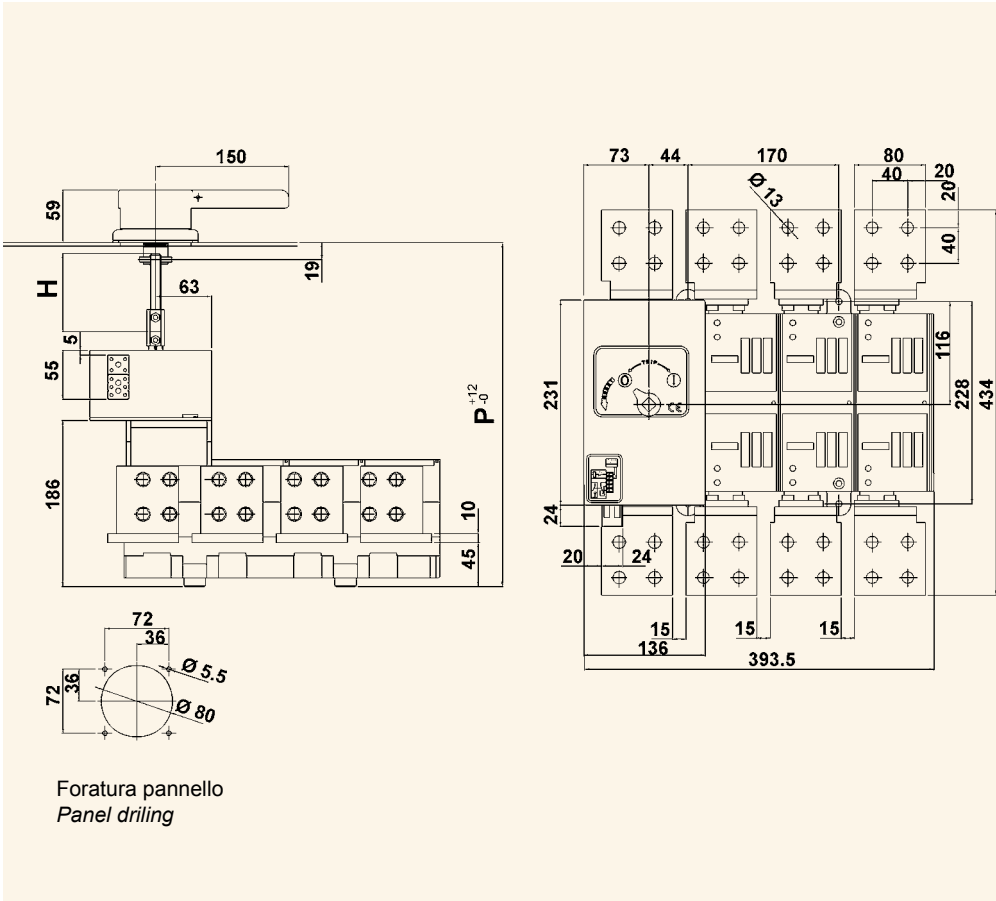
P		C	H
min	max		
298	598	298	P-C

C = costante / constant



Foratura pannello
Panel drilling





VC6P BA 2000 A

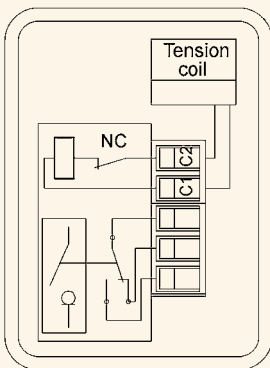
Legenda / Caption

P		C	H
min	max		
298	598	298	P-C

C = costante / constant

Foratura pannello
Panel drilling

Schema morsettiere
Terminal board diagram



Motorized load break switches

GENERALITÀ

Le nuove serie **VISUALCOMPACT P-F MS** sono interruttori- sezionatori motorizzati a 3 e 4 poli con e senza porta fusibili. Assicurano attraverso un comando a distanza manovre di apertura e chiusura sotto carico in sistemi e impianti di bassa tensione.

CARATTERISTICHE

Le caratteristiche tecniche degli interruttori di manovra sezionatori impiegati nei VISUAL COMPACT P-F MS sono rispondenti a quanto riportato nei capitoli riguardanti la serie VISUALCOMPACT P-F.

- A) Manovra manuale d'emergenza (0-1e 1-0) con maniglia a corredo.
- B) Blocco meccanico di sicurezza lucchettabile, interdice la manovra elettrica e manuale.
- C) Visualizzazione meccanica e luminosa (led) della pos. 0,1
- D) Segnalazione esterna della posizione tramite contatto AUX. (vedi morsettiera)
- E) tempo di manovra (0-1 o 1-0) 1,5 sec.
- F) Alimentazione aux. 12/24 vcc. 110/220/380Vca
- G) Temperatura ambiente di funzionamento -20°C + 45°C

CONFORMITÀ ALLE NORME

IEC 60947-1 IEC 60947-3, CEI EN 60947-1 / CEI EN 60947-3
IEC 439-1, CEI EN 60439-1
IEC 204-1, CEI EN 60204-1
VDE 0660 Teil 107

GENERALITIES

The new series **VISUALCOMPACT P-F MS** are three and four poles load break switches and fuse load break switches supplied with a motorgear they are used under load operation to remote control of low voltage systems

CHARACTERISTICS

The technical characteristics of the load break switches used in the VISUALCOMPACT P-F MS are correspondent to as shown in the chapter of VISUALCOMPACT P-F series

- A) Emergency manual operation (0-1 and 1-0) by means of equipped handle.
- B) Emergency padlockable mechanical block of electrical and manual operations
- C) Mechanical and illuminate indication (led) of position 0,1
- D) External input of position segnalization by auxiliary contacts (see terminal board diagram)
- E) 0-1 or 1-0 operating time 1,5 sec.
- F) Voltages 12/24V DC, 110/220/380V AC
- G) Working ambient temperature from -20°C +45°C

CONFORMITY TO STANDARDS

IEC 60947-1 IEC 60947-3, CEI EN 60947-1 / CEI EN 60947-3
IEC 439-1, CEI EN 60439-1
IEC 204-1, CEI EN 60204-1
VDE 0660 Teil 107

VISUALCOMPACT VCP-F MS

Codici per l'ordinazione

Order references

Tipo Type	Corrente nominale Rated current	Poli Poles	
		3	4
VC3P MS	315 A	13001MS	13011MS
	400 A	13002MS	13012MS
VC4P MS	630 A	14003MS	14013MS
VC5P MS (35 kA)	800 A	15000MS	15010MS
	1000 A	15001MS	15011MS
	1250 A	15002MS	15012MS
VC5P MS (50 kA)	800 A	15007MS	15017MS
	1000 A	15008MS	15018MS
	1250 A	15009MS	15019MS
	1600 A	15003MS	15013MS
	2000 A	15004MS	15014MS
	2500 A	15005MS	15015MS
	3150 A	15006MS	15016MS



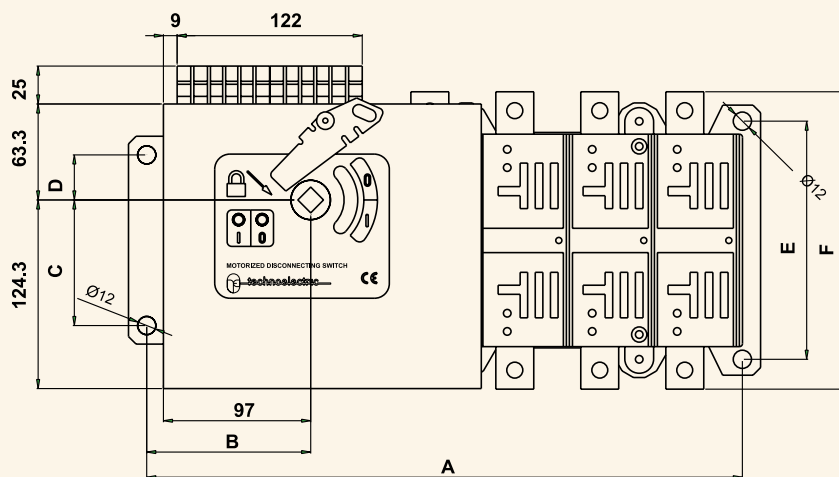
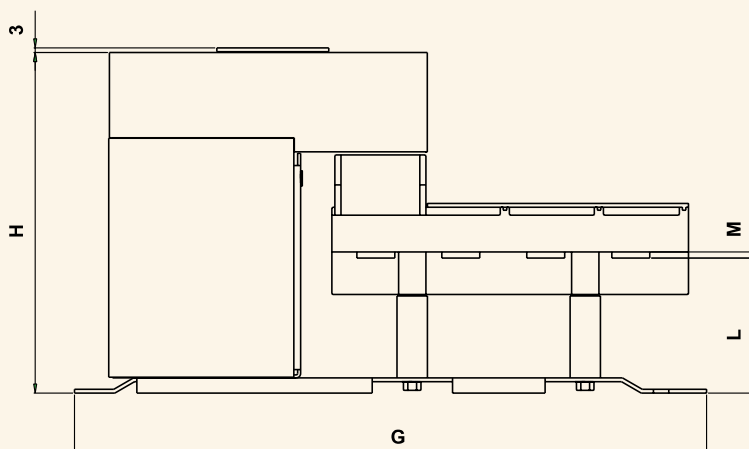
* Per esecuzione quadripolare con neutro a piena corrente (già di serie fino a 1250A) aggiungere "FN" al termine del codice del corrispondente sezionatore quadripolare da 1600A in poi.
For full current switches (standard until 1250A) add "FN" to the code of corresponding four pole switch from 1600A onward.

Tipo Type	Corrente nominale Rated current	Poli Poles	
		3	4
VC3F MS (*)	200 A	14041MS	14051MS
	250 A	14042MS	14052MS
VC4F MS (*)	315 A	14022MS	14032MS
	400 A	14023MS	14033MS
VC5F MS (*)	630 A	15020MS	15030MS
	800 A	15041MS	15051MS



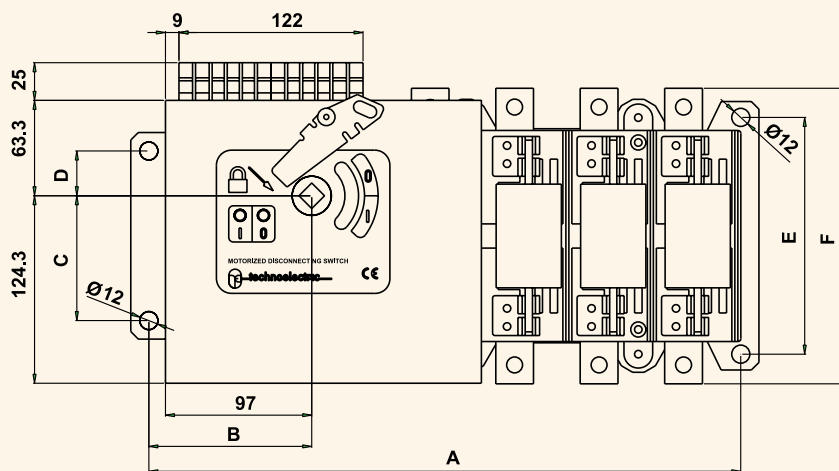
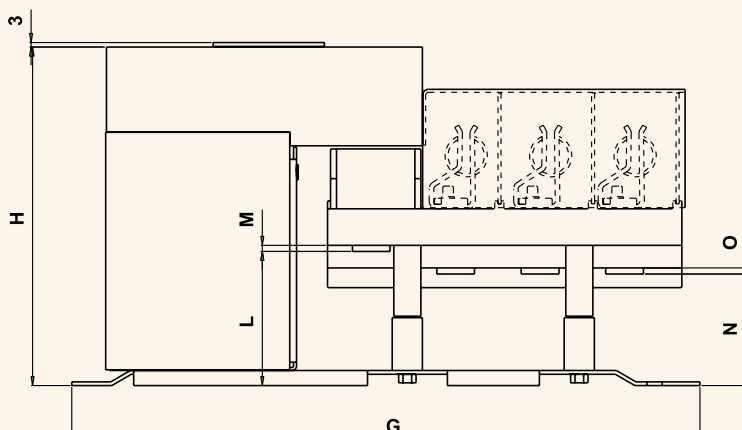
(*) Per i fusibili da impiegare vedi pag. 77
For the fuses to use, see page 77

VCP MS 315 ÷ 3150 A



Tipo / type	A	B	C	D	E	F	G	H	L	M
VC3P 315-400A	392,5	108	82,8	29,7	157	196	416,5	224,5	89	4
VC4P 630A	418,2	108,6	101,9	33,6	180	230	442,2	224,5	68,5	6
VC5P 800-1250A	469,2	106	143,3	40,2	225	306	491,2	224,5	65	7
VC5P 1600-2000A	469,2	106	143,3	40,2	225	306	491,2	263,5	58	7
VC5P 2500-3150A	469,2	106	143,3	40,2	225	306	491,2	302,5	58	7
VC6P 1600A	469,2	106	143,3	40,2	225	414	491,2	263,5	54	10
VC6P 2000A	469,2	106	143,3	40,2	225	434	491,2	263,5	54	10
VC6P 2500A	469,2	106	143,3	40,2	225	444	491,2	302,5	55	15
VC6P 3150A	469,2	106	143,3	40,2	225	484	491,2	341,5	55	15

VCF MS 200 ÷ 800 A



Tipo / type	A	B	C	D	E	F	G	H	L	M	N	O
VC3F 200-250A	392,5	108	82,8	29,7	157	196	416,5	224,5	89	4	74	4
VC4F 315-400A	418,2	108,6	101,9	33,6	180	230	442,2	224,5	68,5	6	53,5	5
VC5F 630-800A	469,2	106	143,3	40,2	225	286	491,2	241,5	75	7	55,5	7



Maniglie per il comando manuale d'emergenza comprese nella fornitura.

Handles for emergency manual operation is supplied with the switch.

maniglia blocco porta / door interlock handle

Tipo Type	VC1P	VC2P	VC3P	VC4P	VC5P	VC5P 50 kA					VC6P			
Codice Code						50kA	1600A	2000A	2500A	3150A	1600A	2000A	2500A	3150A
	18001	18001	18003	18003	18005 18007	18830 / 18844								



18001



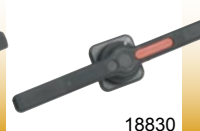
18003



18005



18007



18830



18844

maniglia blocco porta di emergenza / Red/yellow door interlock handle

Tipo Type	VC1P	VC2P	VC3P	VC4P	VC5P	VC5P 50 kA					VC6P			
Codice Code						50kA	1600A	2000A	2500A	3150A	1600A	2000A	2500A	3150A
	18002	18002	18004	18004	18006 18008	18831 / 18847								



18002



18004



18006



18008



18831



18847

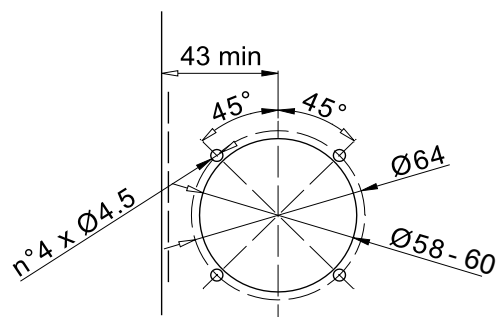
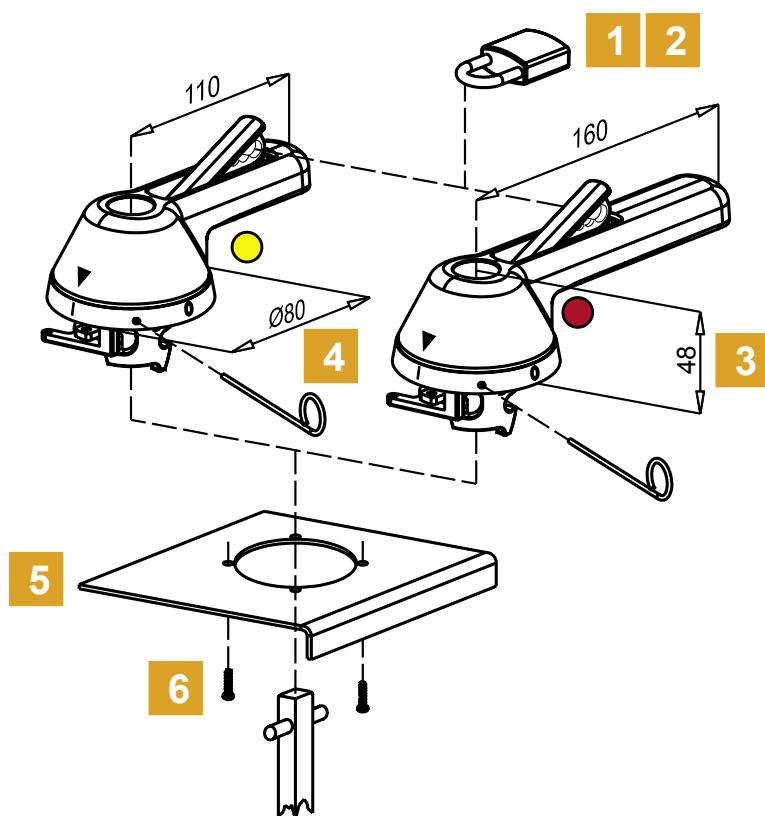
maniglia blocco porta/emergenza con doppia funzione di sicurezza. door interlock handle/emergency with double function of security.

	VC1P	VC2P	VC3P	VC4P	VC5P
	18234 ●	18234 ●	18234 ●		
				18236 ●	18236 ●
	18235 ●	18235 ●	18235 ●		
				18237 ●	18237 ●

Codici per l'ordinazione
Order referencesmaniglia blocco porta/emergenza con doppia funzione di sicurezza.
door interlock handle/emergency with double function of security

- Adatta per montaggio su portella con dispositivo di **blocco porta** in posizione On.
- Grado di protezione **IP 65**
- Disponibile anche nella versione per emergenza (rosso/gialla).

- For door mounting with **Door interlocking** in "On" position.
- **IP 65** degree of protection.
- Available also for emergency operation (red/yellow).



1	Lucchettabile (max 3 lucchetti 1xØ8+2xØ6) in posizione Off.	Pad-lockable in "Off" position with max 3 padlocks of 1xØ8+2xØ6.
2	Apertura della portella impedita quando la maniglia è lucchettata in posizione Off.	Door opening is prevented when the handle is padlocked in "Off" position.
3	Ingombro inferiore a 50 mm in profondità per permettere l'utilizzo anche in quadri a doppia portella.	Handle height less than 50 mm for suitability with two-doors type panels.
4	Permette a mezzo di un apposito attrezzo, fornito con la maniglia, l'esclusione del dispositivo di blocco porta e quindi l'apertura della portella anche a interruttore in posizione di ON. Il dispositivo bloccoporta si ripristina automaticamente al chiudersi della porta.	With the use of the special tool (supplied), the door interlock mechanism can be bypassed maintaining the switch in the "On" position and the door can be opened. The door interlocking mechanism is automatically re-established on closing door.
5	Può essere montata su portelle di qualsiasi spessore.	Can be mounted on doors of any thickness.
6	Posizione della maniglia fissa quando la portella è aperta.	Position of handle fixed when the door is open.

Accessories

Codici per l'ordinazione
Order references

albero comando 200 mm / shaft 200 mm



18201-18207

Tipo Type	VC1P	VC2P	VC3P	VC4P	VC5P	VC5P 50 kA					VC6P			
Codice Code						50kA	1600A	2000A	2500A	3150A	1600A	2000A	2500A	3150A
	18201	18201	18207	18207	18207	18207								

albero comando 300 mm / shaft 300 mm



18202-18208

Tipo Type	VC1P	VC2P	VC3P	VC4P	VC5P	VC5P 50 kA					VC6P			
Codice Code						50kA	1600A	2000A	2500A	3150A	1600A	2000A	2500A	3150A
	18202	18202	18208	18208	18208	18208								

albero comando 400 mm / shaft 400 mm



18203-18209

Tipo Type	VC1P	VC2P	VC3P	VC4P	VC5P	VC5P 50 kA					VC6P			
Codice Code						50kA	1600A	2000A	2500A	3150A	1600A	2000A	2500A	3150A
	18203	18203	18209	18209	18209	18209								

prolunga albero comando 100 mm / extension shaft 100 mm



18030 -18032

Tipo Type	VC1P	VC2P	VC3P	VC4P	VC5P	VC5P 50 kA					VC6P			
Codice Code						50kA	1600A	2000A	2500A	3150A	1600A	2000A	2500A	3150A
	18030	18030	18032	18032	18032	18032								

prolunga albero comando 200 mm / extension shaft 200 mm



18033 -18035

Tipo Type	VC1P	VC2P	VC3P	VC4P	VC5P	VC5P 50 kA					VC6P			
Codice Code						50kA	1600A	2000A	2500A	3150A	1600A	2000A	2500A	3150A
	18033	18033	18335	18035	18035	18035								

prolunga albero comando 300 mm / extension shaft 300 mm



18036 -18038

Tipo Type	VC1P	VC2P	VC3P	VC4P	VC5P	VC5P 50 kA					VC6P			
Codice Code						50kA	1600A	2000A	2500A	3150A	1600A	2000A	2500A	3150A
	18036	18036	18038	18038	18038	18038								

Codici per l'ordinazione
Order references

prolunga albero comando 400 mm / extension shaft 400 mm



18037 -18039

Tipo Type	VC1P	VC2P	VC3P	VC4P	VC5P	VC5P 50 kA					VC6P			
Codice Code						50kA	1600A	2000A	2500A	3150A	1600A	2000A	2500A	3150A
	18037	18037	18039	18039	18039	18039								

maniglia diretta / direct handle

Tipo Type	VC1P	VC2P	VC3P	VC4P	VC5P	VC5P 50 kA					VC6P			
Codice Code						50kA	1600A	2000A	2500A	3150A	1600A	2000A	2500A	3150A
	18020	18021	18320	18022	18023	18840								

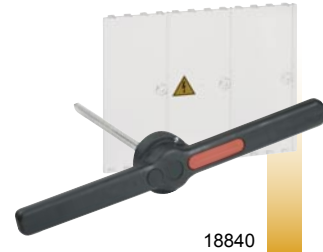
(*) Fornita completa di schermo protezione contatti principali
Supplied with main contacts cover shield



18020 - 18021



18320 - 18022 - 18023



18840

blocco lucchetto per maniglia diretta / Padlock for direct handle



Tipo Type	VC1P	VC2P	VC3P	VC4P	VC5P	VC5P 50 kA					VC6P			
Codice Code						50kA	1600A	2000A	2500A	3150A	1600A	2000A	2500A	3150A
	18240	18241	18242	18243	18244	18244	18245	18245	18246	18246	18245	18245	18246	18247

Neutro sbullonabile / Fuse link



18110 + 18114

Tipo Type	VC1P	VC2P	VC3P	VC4P	VC5P	VC5P 50 kA					VC6P			
Codice Code						50kA	1600A	2000A	2500A	3150A	1600A	2000A	2500A	3150A
	18110	18111	18112	18113	18114	18114								

maniglia blocco porta con blocco chiave / door interlock handle with key lock

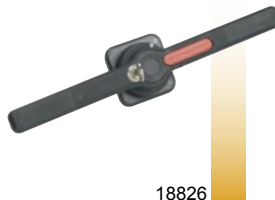
Tipo Type	VC1P	VC2P	VC3P	VC4P	VC5P	VC5P 50 kA				VC6P				
Codice Code						50kA	1600A	2000A	2500A	3150A	1600A	2000A	2500A	3150A
	18100	18100	18100	18100	18102	18826/18829								



18100



18102



18826



18829

maniglia blocco porta con dispositivo di sblocco con attrezzo speciale door interlock handle with defetat mechanism (special tool)

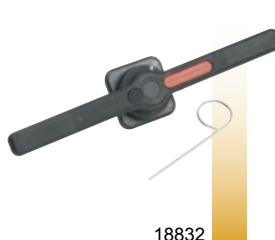
Tipo Type	VC1P	VC2P	VC3P	VC4P	VC5P	VC5P 50 kA				VC6P				
Codice Code						50kA	1600A	2000A	2500A	3150A	1600A	2000A	2500A	3150A
	18220	18220	18222	18222	18224	18832 / 18850								



18220



18222 - 18224



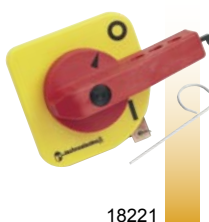
18832



18850

maniglia blocco porta emergenza con dispositivo di sblocco con attrezzo speciale red/yellow door interlock handle with defetat mechanism (special tool)

Tipo Type	VC1P	VC2P	VC3P	VC4P	VC5P	VC5P 50 kA				VC6P				
Codice Code						50kA	1600A	2000A	2500A	3150A	1600A	2000A	2500A	3150A
	18221	18221	18223	18223	18225	18833 / 18858								



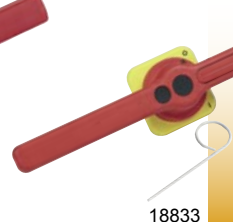
18221



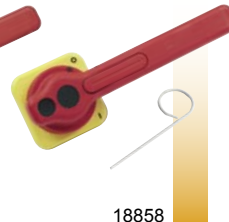
18223



18225



18833

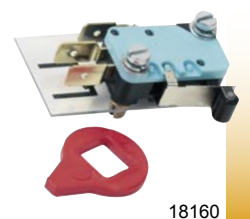
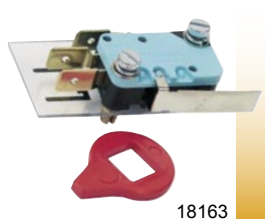
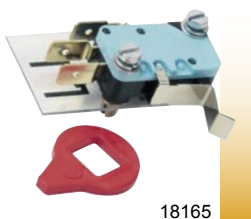


18858

Codici per l'ordinazione
Order references

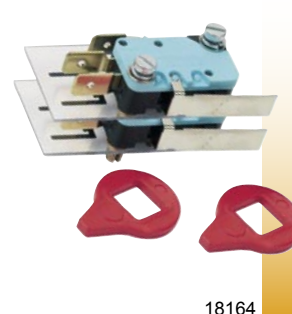
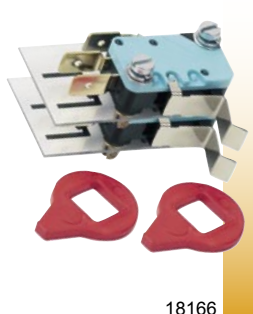
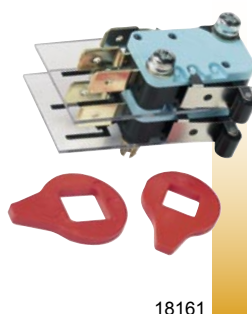
contatti ausiliari 1NA+1NC / auxiliary contacts 1NA+1NC

Tipo Type	VC1P	VC2P	VC3P	VC4P	VC5P	VC5P 50 kA				VC6P				
Codice Code						50kA	1600A	2000A	2500A	3150A	1600A	2000A	2500A	3150A
	18165	18165	18163	18160	18163	18163								



contatti ausiliari 2NA+2NC / auxiliary contacts 2NA+2NC

Tipo Type	VC1P	VC2P	VC3P	VC4P	VC5P	VC5P 50 kA				VC6P				
Codice Code						50kA	1600A	2000A	2500A	3150A	1600A	2000A	2500A	3150A
	18166	18166	18164	18161	18164	18164								



contatti ausiliari 1NA+1NC con apertura posticipata
auxiliary contacts 1NA+1NC break after main contacts

Tipo Type	VC1P	VC2P	VC3P	VC4P	VC5P	VC5P 50 kA				VC6P				
Codice Code						50kA	1600A	2000A	2500A	3150A	1600A	2000A	2500A	3150A
	18120	18120	18122	18122	18127	18127								



contatti ausiliari 2NA+2NC con apertura posticipata
auxiliary contacts 2NA+2NC break after main contacts



18123 - 18125 - 18128

Tipo Type	VC1P	VC2P	VC3P	VC4P	VC5P	VC5P 50 kA				VC6P			
Codice Code					50kA	1600A	2000A	2500A	3150A	1600A	2000A	2500A	3150A
	18123	18123	18125	18125	18128	18128							

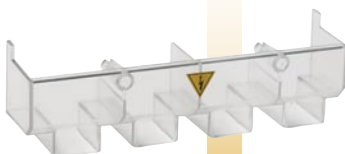
calotta protezione terminali superiori / upper terminal cover



18050 - 18052 - 18350
18054 - 18056 - 18058

Tipo Type	VC1P	VC2P	VC3P	VC4P	VC5P	VC5P 50 kA				VC6P			
Codice Code					50kA	1600A	2000A	2500A	3150A	1600A	2000A	2500A	3150A
	18050	18052	18350	18054	18056	18056	18058	-					

calotta protezione terminali inferiore / lower terminal cover



18051 - 18053 - 18055
18057 - 18059

Tipo Type	VC1P	VC2P	VC3P	VC4P	VC5P	VC5P 50 kA				VC6P			
Codice Code					50kA	1600A	2000A	2500A	3150A	1600A	2000A	2500A	3150A
	18051	18053	18351	18055	18057	18057	18059	-					

Codici per l'ordinazione
Order references

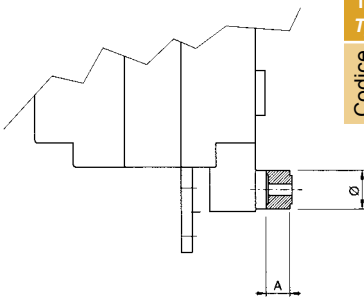
schermo protezione contatti principali / main contacts cover shield



18060 - 18061
18062 - 18063

Tipo Type	VC1P	VC2P	VC3P	VC4P	VC5P	VC5P 50 kA				VC6P				
Codice Code						50kA	1600A	2000A	2500A	3150A	1600A	2000A	2500A	3150A
	18060	18061	18360	18062	18063	18063								

spessore rialzo / risers



Tipo Type	VC1P	VC2P	VC3P	VC4P	VC5P	VC5P 50 kA				VC6P				
Codice Code						50kA	1600A	2000A	2500A	3150A	1600A	2000A	2500A	3150A
	18290	18291	18292	18293	18293	18293								

TIPO TYPE	A	Ø
VC1	5	15
VC2	5	18
VC3	10	17
VC4-5	15	24



ripartitore di corrente / current distribution frame

Tipo Type	VC1P	VC2P	VC3P	VC4P	VC5P	VC5P 50 kA				VC6P				
Codice Code						50kA	1600A	2000A	2500A	3150A	1600A	2000A	2500A	3150A
	18860	18861	18862	-	-	-								



18860



18861



18862

blocco manovra elettrico / electric interlock



Dispositivo di sicurezza per tutta la serie di interruttori di manovra sezionatori VCP-VCF a richiesta.

Safety device for switch disconnecter VCP-VCF series on demande.

SERIE VCP - VCP Series			VC1P	VC2P	VC3P	VC4P	VC5P	VC5P/50kA					VC6P				
	Pos.	Pag.						50kA	1600A	2000A	2500A	3150A	1600A	2000A	2500A	3150A	
Maniglia blocco porta Door interlock handle	1		18001	18001	18003	18003	18003	18830 / 18844									
Maniglia blocco porta di emergenza Red/yellow door interlock handle	1		18002	18002	18004	18004	18006	18831 / 18847									
● Maniglia blocco porta con doppia funzione di sicurezza. Door interlock handle with double function of security		48	18234	18234	18234	18236	18236	18238									
● Maniglia blocco porta/emergenza con doppia funzione di sicurezza. Door interlock handle/emergency with double function of security		48	18255	18235	18235	18237	18237	18239									
Albero comando 200 mm Shaft 200 mm	5		18201	18201	18207	18207	18207	18207									
Albero comando 300 mm Shaft 300 mm	5		18202	18202	18208	18208	18208	18208									
Albero comando 400 mm Shaft 400 mm	5		18203	18203	18209	18209	18209	18209									
● Prolunga albero comando 100 mm Extension shaft 100 mm		50	18030	18030	18032	18032	18032	18032									
● Prolunga albero comando 200 mm Extension shaft 200 mm		50	18033	18033	18035	18035	18035	18035									
● Prolunga albero comando 300 mm Extension shaft 300 mm		50	18036	18036	18038	1808	18038	18038									
● Prolunga albero comando 400 mm Extension shaft 400 mm		51	18037	18037	18039	18039	18039	18039									
Maniglia diretta * Direct handle *	2		18020	18021	18320	18022	18023	18840									
● Blocco lucchetto per maniglia diretta Interlock for direct handle		51	18240	18241	18242	18243	18244	18244	18245	18245	18245	18246	18247	18245	18245	18246	-
Maniglia blocco porta con blocco chiave Door interlock handle with key lock	3		18100	18100	18100	18100	18102	18826 doppia 18829 mono braccio									
Maniglia blocco porta con dispositivo di sblocco con attrezzo speciale Door interlock handle with defeat mechanism (special tool)	4		18220	18220	18220	18222	18224	18832 doppia 18850 mono braccio									
Maniglia blocco porta emergenza con dispositivo di sblocco con attrezzo speciale Red/yellow door interlock handle with defeat mecha- nism (special tool)	4		18221	18221	18223	18223	18225	18833 doppia 18858 mono braccio									
Contatti ausiliari 1NA+1NC Auxiliary contacts 1NO+1NC	9		18165	18165	18163	18160	18163	18163									
Contatti ausiliari 2NA+2NC Auxiliary contacts 2NO+2NC	9		18166	18166	18164	18161	18164	18164									
● Contatti ausiliari 1NA+1NC con apertura posticipata Auxiliary contacts 1NO+1NC break after main contacts			18120	18120	18122	18122	18127	18127									
● Contatti ausiliari 2NA+2NC con apertura posticipata Auxiliary contacts 2NO+2NC break after main contacts			18123	18123	18125	18125	18128	18128									
Calotta protezione terminali superiori Upper terminal cover	6		18050	18052	18350	18354	18056	18056	18058	-							
Calotta protezione terminali inferiori Lower terminal cover	7		18051	18053	18351	18055	18057	18057	18058	-							
Schermo protezione contatti principali Main contact cover shield	8		18060	18061	18360	18062	18063	18063									
● Spessore rialzo Risers		51	18290	18291	18292	18293	18293	18293									
● Kit per interruttori 6-8 poli (orizzontale) Assembling kit for 6-8 poles switch (horizontal)			18610	18620	18630	18640	18650	-									
● Kit per interruttori 6-8 poli (verticale) Assembling kit for 6-8 poles switch (vertical)			18615	18625	18635	18645	18655	-									
● Ripartitore di corrente Current distribution frame		51	18860	18861	18862	-	-	-									
Blocco manovra elettrico Electric interlock		51						a richiesta on demand									

Tipo Type	Codice Code
VC1P	18100
VC2P	18100
VC3P	18100
VC4P	18100
VC5P 35 kA	18102
VC5P 50 kA	18826
VC6P	18829

Tipo Type	Codice Code
VC1P	18050
VC2P	18052
VC3P	18350
VC4P	18054
VC5P/1250	18056
VC5P/1250	18058

Colore Color	Nero Black	Giallo/rosso Red/yellow
Tipo Type	Codice Code	Codice Code
VC1P	18001	18002
VC2P	18001	18002
VC3P	18003	18004
VC4P	18003	18004
VC5P/1250	18005	18006
VC5P/1250	18007	18008

Tipo Type	Codice Code
VC1P	18060
VC2P	18061
VC3P	18360
VC4P	18062
VC5P/6P	18063

Colore Color	Nero Black	Giallo/rosso Red/yellow
Tipo Type	Codice Code	Codice Code
VC5/50kA - VC6	18830/18844	18831/18847

Tipo Type	Codice Code
VC1P	18020
VC2P	18021
VC3P	18320
VC4P	18022
VC5P/1250	18023
VC5P/50kA	18840
VC6P	18840

Completa di schermo
With fuses cover

Tipo Type	Codice Code	Cont. Aux Aux cont
VC1/2P	18165	1NA+1NC
VC3P	18164	
VC4P	18160	
VC5/6P	18163	
VC1/2P	18166	2NA+2NC
VC3P	18163	
VC4P	18161	
VC5/6P	18164	

Tipo Type	Codice Code	L (mm)
VC1/2P	18201	
VC3/4/5/6P	18207	200
VC1/2P	18202	300
VC3/4/5/6P	18208	
VC1/2P	18203	400
VC3/4/5/6P	18209	

Tipo Type	Codice Code
VC1P	18051
VC2P	18053
VC3P	18351
VC4P	18055
VC5P/1250	18057
VC5P/1600	18059

Colore Color	Nero Black	Giallo/rosso Red/yellow
Tipo Type	Codice Code	Codice Code
VC1P/2P	18220	18221
VC3P/4P	18222	18223
VC5P	18224	18225
VC5P/50kA	18832	18833
VC6P	18832	18833
VC5P/50kA - VC6	18850	18858

