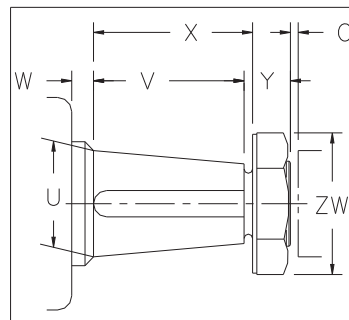


Type MM Coupling Size	For: AISE Mill Motor Frame Sizes	Rough Bored Composite Hub Dimensions & Part Numbers				Finish Bored Composite Hub For AISE Mill Motors Dimensions & Part Numbers									
		Dimensions			Part Number	Dimensions						Bore Dia.		Keyway	Part Number
		C <sub>H</sub>	E <sub>M</sub>	X <sub>M</sub>		C	C <sub>HM</sub>	E <sub>HM</sub>	X <sub>HM</sub>	M	N	Large End	Small End		
1 1/2	802	3/4	3 7/8	23/32	1 1/2H MMHUB	1/8	3/4	3 5/16	23/32	2 5/8	5/16				1 1/2H MMHUB02
2	602	1 1/16	4 3/16	27/32	2H MMHUB	1/8	1 1/16	3	27/32	-	-	1.749	1.4365	1/2 x 1/4	2H MMHUB02
2 1/2	AC1	1 1/8	5 9/16	1 1/8	2 1/2H MMHUB	3/16	1 1/8	3	1 1/8	-	-				2 1/2H MMHUB02
2 1/2	AC2														
2 1/2	AC4														
1 1/2	803	3/4	3 7/8	23/32	1 1/2H MMHUB	1/8	3/4	3 7/8	23/32	2 5/8	3/8				1 1/2H MMHUB0304
2	804	1 1/16	4 3/16	27/32	2H MMHUB	1/8	1 1/16	3 9/16	27/32	2 5/8	1/16	1.999	1.6344	1/2 x 1/4	2H MMHUB0304
2 1/2	603	1 1/8	5 9/16	1 1/8	2 1/2H MMHUB	3/16	1 3/16	3 1/2	1 1/16	-	-				2 1/2H MMHUB0304
3	604	1 3/16	5 5/8	1 5/8	3H MMHUB	3/16	1 3/16	3 1/2	1 5/8	-	-				3H MMHUB0304
2	806	1 1/16	4 3/16	27/32	2H MMHUB	1/8	1 1/16	4 3/16	27/32	3 1/8	3/16				2 H MMHUB06
2 1/2	606	1 1/8	5 9/16	1 1/8	2 1/2H MMHUB	3/16	1 5/16	4	15/16	-	-	2.499	2.0823	1/2 x 1/4	2 1/2H MMHUB06
3	AC8	1 3/16	5 5/8	1 5/8	3H MMHUB	3/16	1 5/16	4	1 1/2	-	-				3H MMHUB06
3 1/2	AC12	1 3/8	6 1/8	1 29/32	3 1/2H MMHUB	1/4	1 3/8	4	1 29/32	-	-				3 1/2H MMHUB06
2 1/2	808	1 1/8	5 9/16	1 1/8	2 1/2H MMHUB	3/16	1 9/32	4 21/32	31/32	3 3/4	5/32				2 1/2H MMHUB08
3	608	1 3/16	5 5/8	1 5/8	3H MMHUB	3/16	1 7/16	4 1/2	1 3/8	-	-	2.9985	2.5298	3/4 x 1/4	3H MMHUB08
3 1/2	608	1 3/8	6 1/8	1 29/32	3 1/2H MMHUB	1/4	1 1/2	4 1/2	1 25/32	-	-				3 1/2H MMHUB08
2 1/2	810	1 1/8	5 9/16	1 1/8	2 1/2H MMHUB	3/16	1 9/32	4 25/32	31/32	4	9/32				2 1/2H MMHUB10
3	610	1 3/16	5 5/8	1 5/8	3H MMHUB	3/16	1 9/16	4 1/2	1 1/4	-	-	3.2485	2.7798	3/4 x 1/4	3H MMHUB10
3 1/2	AC18	1 3/8	6 1/8	1 29/32	3 1/2H MMHUB	1/4	1 5/8	4 1/2	1 21/32	-	-				3 1/2H MMHUB10
4	610	1 9/16	6	2 3/16	4H MMHUB	1/4	1 5/8	4 1/2	2 1/8	-	-				4H MMHUB10
2 1/2	812	1 1/8	5 9/16	1 1/8	2 1/2H MMHUB	3/16	1 9/32	5 13/32	31/32	4 1/4	13/32				2 1/2H MMHUB12
3	612	1 3/16	5 5/8	1 5/8	3H MMHUB	3/16	1 11/16	5	1 1/8	-	-	3.623	3.1022	3/4 x 1/4	3H MMHUB12
3 1/2	AC25	1 3/8	6 1/8	1 29/32	3 1/2H MMHUB	1/4	1 3/4	5	1 17/32	-	-				3 1/2H MMHUB12
4	AC30	1 9/16	6	2 3/16	4H MMHUB	1/4	1 3/4	5	2	-	-				4H MMHUB12
4 1/2	612	1 5/8	7 3/16	2 19/32	4 1/2H MMHUB	5/16	1 13/16	5	2 13/32	-	-				4 1/2H MMHUB12
3	814	1 3/16	5 5/8	3 9/32	3H MMHUB	3/16	1 11/16	5 1/4	1 1/8	5 1/4	1/8				3H MMHUB14
3 1/2	614	1 3/8	6 1/8	1 29/32	3 1/2H MMHUB	1/4	1 7/8	5	1 13/32	-	-	4.248	3.7272	1 x 3/8	3 1/2H MMHUB14
4	AC40	1 9/16	6	2 3/16	4H MMHUB	1/4	1 7/8	5	1 7/8	-	-				4H MMHUB14
4 1/2	AC50	1 5/8	7 3/16	2 19/32	4 1/2H MMHUB	5/16	1 15/16	5	2 9/32	-	-				4 1/2H MMHUB14
5	614	1 5/8	8 5/16	3 9/32	5H MMHUB	5/16	1 15/16	5	2 31/32	-	-				5H MMHUB14
3 1/2	816	1 3/8	6 1/8	1 29/32	3 1/2H MMHUB	1/4	2	5 1/2	1 9/32	-	-				3 1/2H MMHUB16
4	616	1 9/16	6	2 3/16	4H MMHUB	1/4	2	5 1/2	1 3/4	-	-	4.6225	4.0496	1 1/4 x 3/8	4H MMHUB16
4 1/2	616	1 5/8	7 3/16	2 19/32	4 1/2H MMHUB	5/16	2 1/16	5 1/2	2 5/32	-	-				4 1/2H MMHUB16
5	616	1 5/8	8 5/16	3 9/32	5H MMHUB	5/16	2 1/16	5 1/2	2 27/32	-	-				5H MMHUB16
5 1/2	616	1 5/8	10 5/16	3 7/8	5 1/2H MMHUB	5/16	2 1/16	5 1/2	3 7/16	-	-				5 1/2H MMHUB16
6	616	1 5/8	10 5/16	4 5/16	6H MMHUB	5/16	2 1/16	5 1/2	3 7/8	-	-				6H MMHUB16
4	818	1 9/16	6	2 3/16	4H MMHUB	1/4	1 9/16	6	2 3/16	-	-				4H MMHUB18
4 1/2	618	1 5/8	7 3/16	2 19/32	4 1/2H MMHUB	5/16	1 5/8	6	2 19/32	-	-	4.9975	4.3725	1 1/4 x 1/2	4 1/2H MMHUB18
5	618	1 5/8	8 5/16	3 9/32	5H MMHUB	5/16	1 5/8	6	3 9/32	-	-				5H MMHUB18
5 1/2	618	1 5/8	10 5/16	3 7/8	5 1/2H MMHUB	5/16	1 5/8	6	3 7/8	-	-				5 1/2H MMHUB18
6	618	1 5/8	10 5/16	4 5/16	6H MMHUB	5/16	1 5/8	6	4 5/16	-	-				6H MMHUB18
4 1/2	620	1 5/8	7 3/16	2 19/32	4 1/2H MMHUB	5/16	2 1/16	6 3/4	2 5/32	-	-	5.872	5.1689	1 1/2 x 3/4	4 1/2H MMHUB20
5	620	1 5/8	8 5/16	3 9/32	5H MMHUB	5/16	2 1/16	6 3/4	2 27/32	-	-				5H MMHUB20
5 1/2	620	1 5/8	10 5/16	3 7/8	5 1/2H MMHUB	5/16	2 1/16	6 3/4	3 7/16	-	-				5 1/2H MMHUB20
6	620	1 5/8	10 5/16	4 5/16	6H MMHUB	5/16	2 1/16	6 3/4	3 7/8	-	-				6H MMHUB20
5	622	1 5/8	8 5/16	3 9/32	5H MMHUB	5/16	2 11/16	7 1/4	2 7/32	-	-	6.247	5.4918	1 1/2 x 3/4	5H MMHUB22
5 1/2	622	1 5/8	10 5/16	3 7/8	5 1/2H MMHUB	5/16	2 11/16	7 1/4	2 13/16	-	-				5 1/2H MMHUB22
6	622	1 5/8	10 5/16	4 5/16	6H MMHUB	5/16	2 11/16	7 1/4	3 1/4	-	-				6H MMHUB22
5 1/2	624	1 5/8	10 5/16	3 7/8	5 1/2H MMHUB	5/16	2 11/16	9 1/4	2 13/16	-	-	6.9965	6.0330	1 1/2 X 3/4	5 1/2H MMHUB24
6	624	1 5/8	10 5/16	4 5/16	6H MMHUB	5/16	2 11/16	9 1/4	3 1/4	-	-				6H MMHUB24

NOTE: ALL KEYWAYS SHOWN ARE PARALLEL TO THE TAPER. TAPER IS 1 1/4 INCH PER FOOT ON DIAMETER.



**TAPERED BORES** For Tapered Shafts, with or without locknut, determine applicable AISE Mill Motor frame or give data below:

1. U Major diameter.
2. V Length of tapered portion of shaft.
3. X Length to face of lockwasher.
4. Y Length of threaded projection.
5. ZW Locknut diameter across corners.
6. W Clearance to bearing housing.
7. Taper (inches on diameter per foot of length).
8. Keyway width and depth.
9. Whether keyway is parallel to shaft or to taper.
10. C Shaft separation if machines are in place.