

8570/11-407 Art. No. 150554



- For use in Zones 1, 2, 21 and 22, degree of protection IP66, extreme temperature range of $-50 \dots +55 \text{ }^{\circ}\text{C}$
- Optional: pluggable, easily retrofittable Ex e or Ex i auxiliary contacts for control and signalling purposes
- With motor switching capacity AC-3 in accordance IEC/EN 60947-3
- Variants for use in the US / Canada upon request

WebCode **8570A**



R. STAHL Series 8570/11 SolConeX sockets for Zone 1/21 in a 3-, 4- and 5-pole version have full AC-3 switching capacity up to 16 A. The high degree of protection IP66 guarantees the highest level of protection against the penetration of dust and/or water in any application position. Self-cleaning lamellar contacts provide optimum contact and the plugs can be inserted and removed in the zero position quickly and easily. The load disconnect switch, with mechanical locking device and a handle that can be locked in the 0 or I position, is an additional safety feature.

Technical Data

Explosion Protection

Application range (zones)	1 2 21 22
IECEX gas certificate	IECEX PTB 05.0023
ATEX gas certificate	PTB 03 ATEX 1227
IECEX dust certificate	IECEX PTB 05.0023
ATEX dust certificate	PTB 03 ATEX 1227
Certificate EAC	TS RU S-DE.GB04.B.00163
Ambient temperature $^{\circ}\text{C}$	$-30 \dots +55 \text{ }^{\circ}\text{C}$
Gas explosion protection IECEX	Ex db eb IIC T6 Gb
Gas explosion protection ATEX	Ex II 2 G Ex db eb IIC T6 Gb
Gas explosion protection EAC	2 Ex de IIC T6 2 Ex de [ia] IIC T6
Dust explosion protection IECEX	Ex tb IIIC T80 $^{\circ}\text{C}$ Db
Dust explosion protection ATEX	Ex II 2 D Ex tb IIIC T80 $^{\circ}\text{C}$ Db
Dust explosion protection EAC	Ex tD A21 IP66 T80 $^{\circ}\text{C}$
Certificates	ATEX (PTB), Brazil (ULB), Canada (CSA), EAC (STV), IECEX (PTB)
Languages of the documentation	German English

Electrical Data

Rated operational voltage AC	480 – 500 V
Rated operational voltage AC	500 V
Rated operational voltage AC	480 – 500 V
Rated operational current	16 A
Rated operational current	0 – 16 A

8570/11-407 Art. No. 150554

Electrical Data

Type of voltage	Low voltage
Frequency range	50 – 60 Hz
Auxiliary contacts available	No
N-pole present	No
Optional auxiliary contacts	Yes
PE-pole present	Yes

Ambient Conditions

Ambient temperature min.	-30 °C
Ambient temperature max.	+55 °C
Ambient temperature max. note	Max. 16 A
Ambient temperature	-30 °C ... +55 °C

Mechanical Data

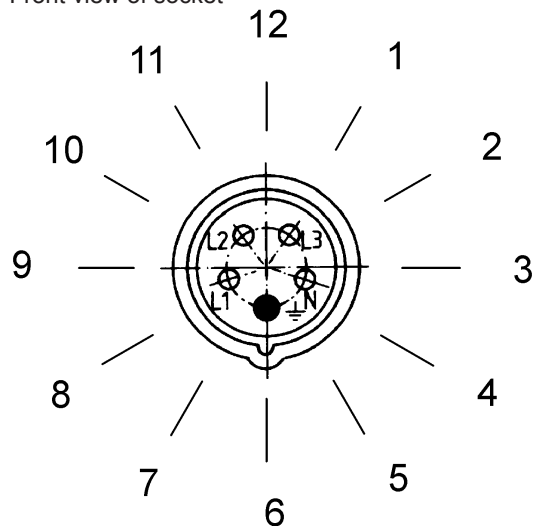
Degree of protection (IP)	IP66
Type of protection note	according to IEC/EN 60529
Enclosure material	Polyamide, Glass fibre reinforced
Silicone-free	Yes
Connection terminals min.	1.5 mm ²
Connection terminals solid max.	2 x 6 mm ²
Connection terminals finely-stranded max.	2 x 4 mm ²
Type of connection cable	Finely stranded Solid
Width	115 mm
Height	181 mm
Length	248 mm
Colour code	Black
Coding (clock hour position)	7
Lockable in	in 0- and I-position
Series	SolConeX
Detailed number of poles	4 P (3 P + PE)
Weight	1.35 kg

8570/11-407 Art. No. 150554

Arrangement of earth contact sockets

Example:

Clock hour position,
Front view of socket

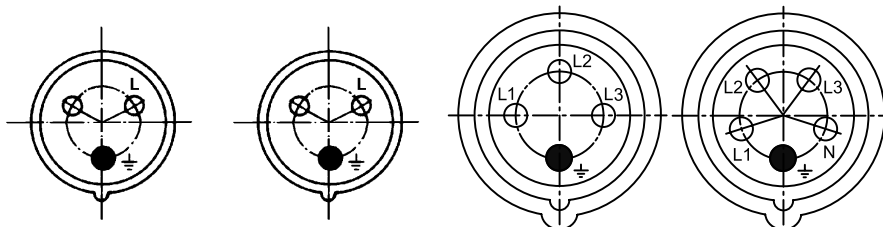


Example:

Clock hour position

Marking of connections

Front view of sockets



230 V = 6 h

2 P + PE

3 P + PE

3 P + N + PE

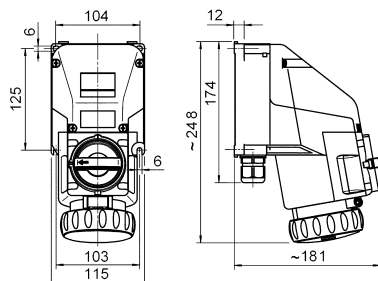
Components

Screw connections	1 x M25
Cable diameter	7 – 17 mm
Cable entry note	positioning on the top or at the side, according to the order
Material of cable entry	Polyamide, black
Stopping plug	1 x M25
Stopping plug material	Polyamide, black
Entries	2 x M25

Technical Drawings



Dimensional Drawings (All Dimensions in mm [inches]) – Subject to Alterations



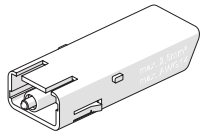
Wall-mounting socket 4-pole / 5-pole

Accessories and Spare Parts

Auxiliary contact

Art. No.

8570/11-407 Art. No. 150554



<p>1 NC max. 500 V AC, max. 110 V DC max. 6 A 2 x 0.5 ... 2.5 mm² solid / finely stranded</p>	<p>150680</p>
<p>1 NC, gold contact max. 500 V AC, max. 110 V DC max. 6 A 2 x 0.5 ... 2.5 mm² solid / finely stranded</p>	<p>150684</p>
<p>1 NO max. 500 V AC, max. 110 V DC max. 6 A 2 x 0.5 ... 2.5 mm² solid / finely stranded</p>	<p>150682</p>
<p>1 NO, gold contact max. 500 V AC, max. 110 V DC max. 6 A 2 x 0.5 ... 2.5 mm² solid / finely stranded</p>	<p>150686</p>

We reserve the right to make alterations to the technical data, dimensions, weights, designs and products available without notice. The illustrations cannot be considered binding.