

AZ/AZM200-B30-RTAG1P20



- Various handles available
- Actuator for hinged guards
- With door detection sensor T
- Easy and intuitive operation
- Greater mechanical stability
- No supplementary door handles required
- Does not protrude into the door opening
- No risk of injury from protruding actuator
- One-hand emergency exit, even in de-energised condition

Data

Ordering data

Note (Delivery capacity)	Phased-out product
Product type description	AZ/AZM 200-B30-RTAG1P20
Article number (order number)	101186144
EAN (European Article Number)	4030661325910
eCl@ss number, Version 9.0	27-27-26-03

Certifications

Note	Certification in combination with the AZ /AZM 200
------	---

General data

Product name	AZ/AZM 200-B30
Enclosure material	Metal film
Material of the actuator	Zinc die-cast
Material of the operators	Aluminium, plastic coating
Emergency exit material	Metal, plastic-coated
Gross weight	1,467 g

General data - Features

Emergency exit	Yes
Door detection sensor	Yes

Mechanical data

Grip	handle
Mechanical life, minimum	1,000,000 Operations
Door hinge	Right
Clamping force in accordance with ISO14119 F zh	2,000 N
Clamping force, maximum F max	2,600 N
Actuator mounted	Outside

Mechanical data - Dimensions

Width of the actuator	115 mm
Length of the actuator	60 mm
Height of the actuator	115 mm
Length of the emergency exit	60 mm
Height of the emergency exit	115 mm
Width of the emergency exit	115 mm

Scope of delivery

Included in delivery	The safety switch / solenoid interlock and the actuator unit must be ordered separately.: The safety switch / solenoid interlock and the actuator unit must be ordered separately.
----------------------	--

Pictures

Product picture (catalogue individual photo)



ID: kb-30f17

| 33,6 kB | .png | 74.083 x 66.322 mm - 210 x 188

Pixel - 72 dpi

| 493,2 kB | .jpg | 352.778 x 315.383 mm - 1000 x 894

Pixel - 72 dpi

| 51,1 kB | .jpg | 32 x 28.6 mm - 320 x 286 Pixel - 254 dpi

Product picture (catalogue individual photo)



ID: kazm2f07

| 44,4 kB | .png | 73.731 x 109.361 mm - 209 x 310

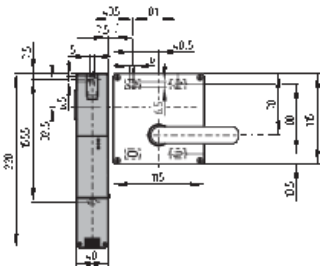
Pixel - 72 dpi

| 642,0 kB | .jpg | 352.425 x 521.758 mm - 999 x 1479

Pixel - 72 dpi

| 68,4 kB | .jpg | 27.093 x 40.047 mm - 320 x 473 Pixel
- 300 dpi

Dimensional drawing basic component

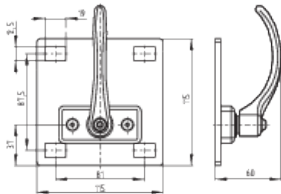


ID: 1azm2m37

| 3,9 kB | .png | 74.083 x 60.678 mm - 210 x 172 Pixel
- 72 dpi

| 134,9 kB | .jpg | 352.778 x 289.278 mm - 1000 x 820
Pixel - 72 dpi

Dimensional drawing actuator



ID: 1azm2b10

| 113,7 kB | .jpg | 352.778 x 245.886 mm - 1000 x 697
Pixel - 72 dpi

| 9,2 kB | .png | 74.083 x 51.506 mm - 210 x 146 Pixel
- 72 dpi

K.A. Schmersal GmbH & Co. KG, Möddinghofe 3, D-42279 Wuppertal

The details and data referred to have been carefully checked. Images may diverge from original. Further technical data can be found in the manual. Technical amendments and errors possible.

Generated on 07.07.2020 14:33:59