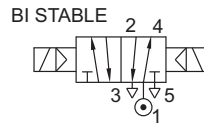


**SERIES : 52S**

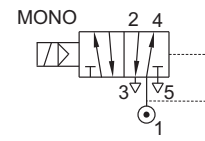
**5/2, 3/2 CONVERTIBLE INLINE POPPET, NAMUR SOLENOID VALVE**

TYPE	PRESSURE

TYPE	PRESSURE
57450	2 - 10 bar



TYPE	PRESSURE
51450	2 - 10 bar



**FEATURES**

- Ideally suited where speed control by blocking exhaust is desired
- Power fail to reset
- Non return plug provided on the exhaust port
- In 3/2 mode exhaust purged to spring chamber



Match Slot to 5/2 for 5/2

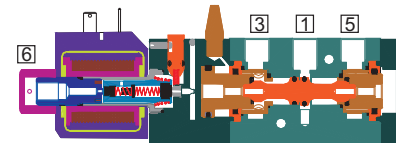
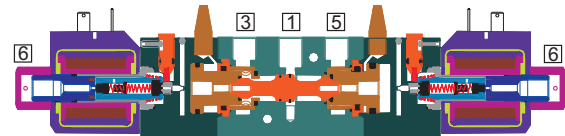


Match Slot to 3/2 for 3/2



**WETTED PARTS**

Code	✕	B1	B5
Body	Anodized Aluminium	Anodized Aluminium	SS 316
Internals	Aluminium, Brass and SS 316	SS 316	SS 316
Guide Assembly	SS 304		
Shadow-Ring	Copper/ Silver/ None		
Plunger, Insert	SS 430		
Spring	SS 302		
Fasteners	SS 304		
Seat, Seals	NBR, Viton		



**AMBIENT AND FLUID TEMPERATURE**

-30 °C to 75 °C

**SPECIAL VERSION AND SUFFIX**

Suffix : (Valve) AM, WO  
 Special version : (Solenoid) CO, FR, SS, LC, III

**MEDIA**

Air, Inert Gases

**APPLICATION**

Operation of double/ single acting actuator

**PORT CONNECTION**

INLET	OUTLET	OUTLET	EXHAUST	EXHAUST	PILOT EXHAUST
1	2	4	3	5	6

Contact Rotex for

- Any other ambient, fluid temperature, media and application
- UL listed, Listed general purpose Valve



**SPARES**

(Refer page 25 for ordering code)

SPARE KIT	CODE
Seal Kit : Oring Set and Plunger Assembly	98
Repair Kit : Oring Set, Plunger Assembly, Fastener, Springs, Manual Override	99
Solenoid Kit : Solenoid, Gasket and Nut	34

**APPROVAL**

(★ applied for)

Approval	TYPE 4X, 6P	IP67	Ex d IIC T4 or T5 or T6 IP66	Ex ia IIC T6 IP67	DGMS	CCOE
		✓	✓	✓	✓	✓
CE		✓	✓	✓		
UL	✓		*			
			✓	✓		
			✓	✓		
			✓	✓		

## 5/2, 3/2 CONVERTIBLE INLINE POPPET TYPE, NAMUR SOLENOID VALVE

### SPECIFICATION

PORT CONNECTION			PRE-SURE bar		ORIFICE (mm)	FLOW FACTOR kv (LPM OF WATER @ 1 bar ΔP)	VALVE TYPE	PILOT PRESSURE	BODY MATERIAL AND INTERNALS				SEALS			MANUAL OVERRIDE		SOLENOID ENCLOSURE				OUTLET PORT		POWER VA		CONSTRUCTION REFERENCE NUMBER
SIZE	BSP(F)	NPT(F)	MINIMUM	MAXIMUM					ALUMINIUM	ALUMINIUM + SS (STD. PORT NPT)	BRASS (SS 316/316L) (STD. PORT NPT)	NBR	Viton	EPDM	Viton GLT	F. Silicon	NIL	STAYPUT CUM MOMENTARY	FLYING LEAD	PLUG IN, IP67	SQ. PLUG IN, IP67	TERMINAL BOX IP67	Ex d IIC, T4 OR T6, IP67	LARGE ENCLOSURE	SOLENOID SIZE	

#### 5/2, 3/2 CONVERTIBLE SINGLE SOLENOID

1/4"	2G	2R	2	10	6	18	51450		×	B1	B5	×	S2		M0	×	M8	22	25	T	E	III	14	2	18	12	8	N15
1/2"	4G	4R	2	10	12	60	51450		×	B1	B5	×	S2		M0	×	M8	22	25	T	E	III	14	4	18	12	8	N16

#### 5/2, 3/2 CONVERTIBLE DOUBLE SOLENOID

1/4"	2G	2R	2	10	6	18	57450		×	B1	B5	×	S2		M0	×		22	25	T	E	III	14	2	18	12	8	N15
1/2"	4G	4R	2	10	12	60	57450		×	B1	B5	×	S2		M0	×		22	25	T	E	III	14	4	18	12	8	N16

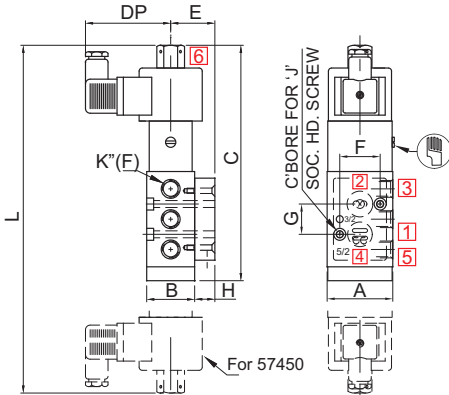
Cable Entry T E \* = Do not specify when opted for. Refer Page # 22 for Value of \*  
M20 x 1.5 19 39  
1/2" NPT 16 37

### ORDERING CODE, EXAMPLE VALVE + SOLENOID

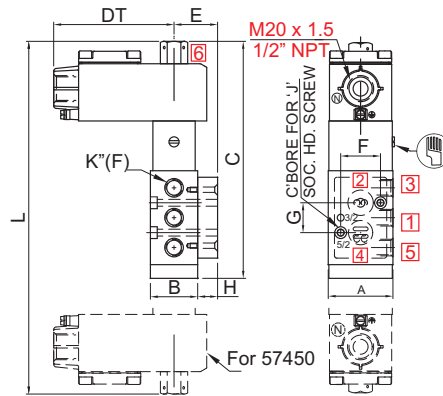
TYPE - SUFFIX - ORIFICE - PORT CONNECTION - BODY AND INTERNALS - MANUAL OVERRIDE - SEAL + SIZE - VOLTAGE - CURRENT - SOLENOID ENCLOSURE - APPROVAL - INSULATION - SPECIAL VERSION  
e.g. 57450-12-4G+110V DC-39

### DIMENSIONS

All Dimensions are in mm



PLUG IN SOLENOID TYPE 22/ 25



TERMINAL BOX/ Ex d/ LARGE ENCLOSURE, TYPE 16, 19, 37, 39

NW	K" (PORT SIZE)	A	B	C	DP	DT	E	F	G	H	J	L	CONST. REF.
<b>VALVE TYPE : 51450</b>													
6	1/4"	53	38	191	68	97	35	32	24	16	M5	--	N15
12	1/2"	75	45	228	68	97	42.5	45	40	20	M6	--	N16
<b>VALVE TYPE : 57450</b>													
6	1/4"	53	38	--	68	97	35	32	24	16	M5	289	N15
12	1/2"	75	45	--	68	97	42.5	45	40	20	M6	232	N16