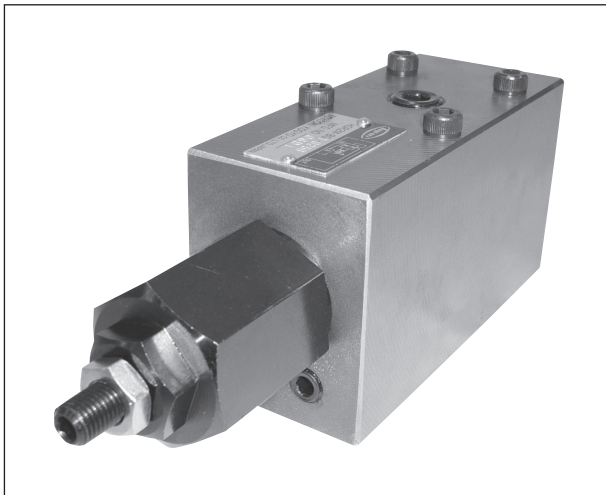


# HY-TEGRA MANIFOLD-MOUNTED TYPE BALANCING VALVE (HGR2M)



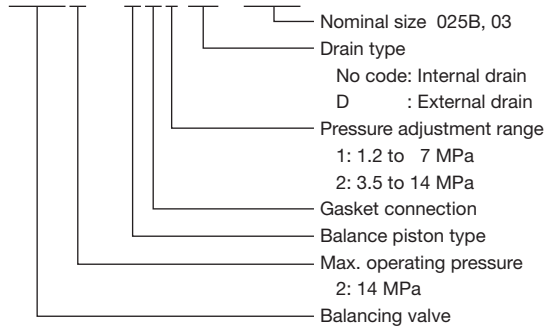
## ■ Features

This is a balancing valve that can be mounted on the HY-TEGRA manifold. This compound pressure control valve supplies any balancing pressure required to ensure the smooth vertical motion of a large load such as a spindle head. It can control the compound function that provides the combination of the pressure reducing valve function and the relief valve function to allow controlling of balancing pressure with a single adjusting screw.

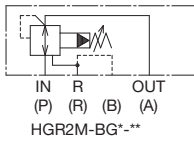
1. Since the valve provides compound functions, the hydraulic system can be made compact.
  2. Pressure adjustment is simple, using only one adjusting screw.
- There are two types of valve differing in their type of drain: internal drain or external drain.

## ■ Description of the model designation

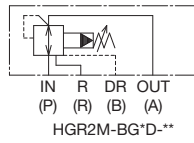
### HGR2M-BG1 (D)-025B



Internal drain type



External drain type

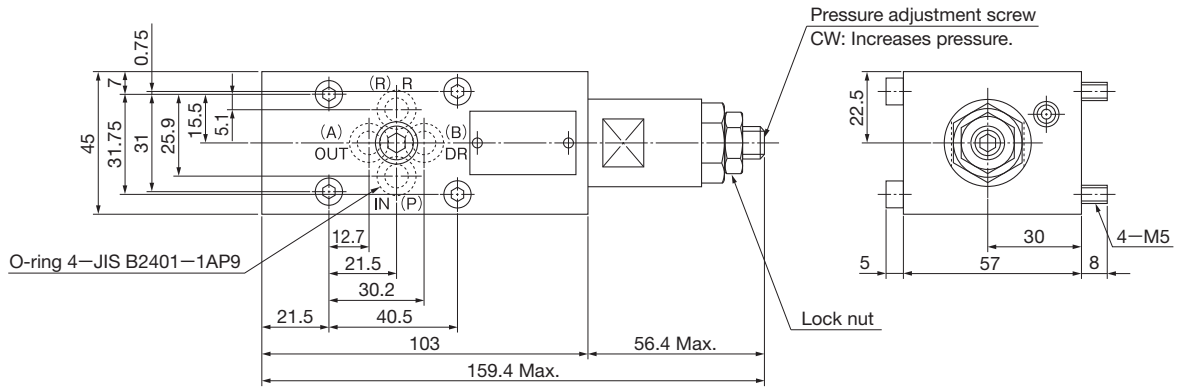


## ■ Specifications

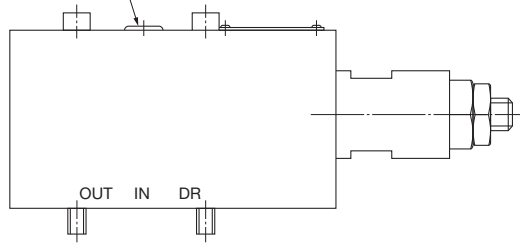
Drain type	Model	Max. operating pressure (MPa)	Rated flow rate (L/min)	Max. flow rate (L/min)	Pressure adjustment range (MPa)
Internal drain	HGR2M-BG*-025B	14	20	40	* symbol 1: 1.2 to 7
	HGR2M-BG*-03		40	80	
External drain	HGR2M-BG*D-025B		20	40	2: 3.5 to 14
	HGR2M-BG*D-03		40	80	

■ Outside dimensions

HGR2M-BG\*(D)-025B



Pressure connection port Rc1/4

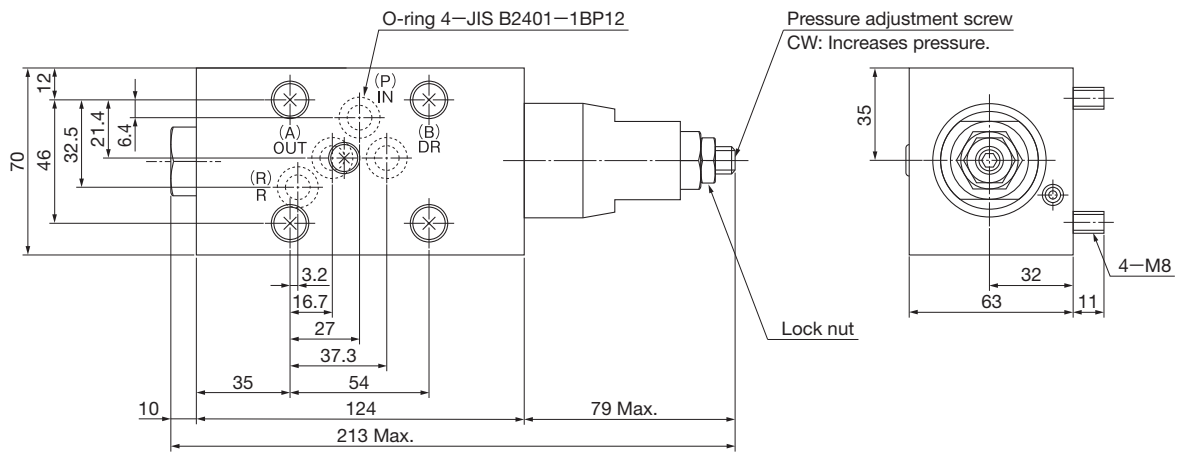


NOTE 1: To use HGR2M-BG\*-025B, plug the B port of the manifold and the subplate.

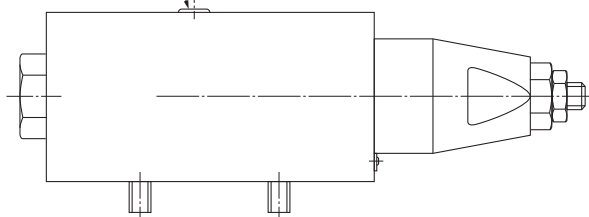
NOTE 2: To use HGR2M-BG\*D-025B, connect the piping using the B port of the manifold and the subplate as the drain port.

Mass: 2.0kg

HGR2M-BG\*(D)-03



Pressure connection port Rc1/4



NOTE 1: To use HGR2M-BG\*-03, plug the B port of the manifold and the subplate.

NOTE 2: To use HGR2M-BG\*D-03, connect the piping using the B port of the manifold and the subplate as the drain port.

Mass: 4.3kg