

SUBBASES

DESIGN	TYPE		REFERENCE NUMBERS		
			for valve Ø nom. 6 1/4" BSP	for valve Ø nom. 12 3/8" BSP 1/2" BSP	
Single subbases	Side ports		355 00 044	355 00 041	355 00 042
	Mixed ports	Without plugs	355 00 045	—	—
		With plugs	355 00 046	—	—
Joinable subbase delivered by itself			355 00 048	—	—
2 end plates			355 00 056	—	—

SUBBASE OPTION

Subbase 1/4" BSP with exhaust ports 3/8" BSP (AFNOR) side ports **355 00 061**, mixed ports **355 00 062** without plugs, mixed ports **355 00 063** with plugs.

CONSTRUCTION

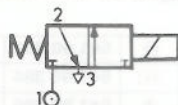
- Body and end covers zinc diecasting
- Sealing (patented) nitrile
- Internal parts : acetal, light alloy
- These valves can be used with or without lubrication. If lubricated use a non-detergent oil without any aggressive additive viscosity 2 to 3.5 Engler at 50°C aniline point 90 to 105
- Filtration required 50 µ

— **SOLENOID PILOTS**

Series 222 and series 226 (see catalogue section 11)

- Body diecasting
- Internal parts corrosion resistant
- Max pilot pressure 10 bars
- Ambient + 60°C at nominal voltage

CHOICE OF SOLENOID PILOT



1 = Pressure
2 = Outlet
3 = Exhaust

Pilot	Fluid	Voltages		Consumption		Insulation class	Protection	Cable entry	Type of manual override
		=	~	=	~				
Series 226	Filtered air or neutral gas	24 V	24 V	6,4 W	10 VA	B tropicalised	IP61	Plug ISO 4400 CM 10 (PE 11)	⊖ Screw
		48 V	48 V						⏏ Impulse
			110 V 220 V 240 V 50/60 Hz						⬆ Button
Series 222	Filtered air or neutral gas	24 V	24 V	5 W	10 VA	E tropicalised	IP54	CM 10 (PE 11)	⊖ Screw
		48 V	48 V						⏏ Impulse
			110 V 220 V 240 V 50 Hz						⬆ Button