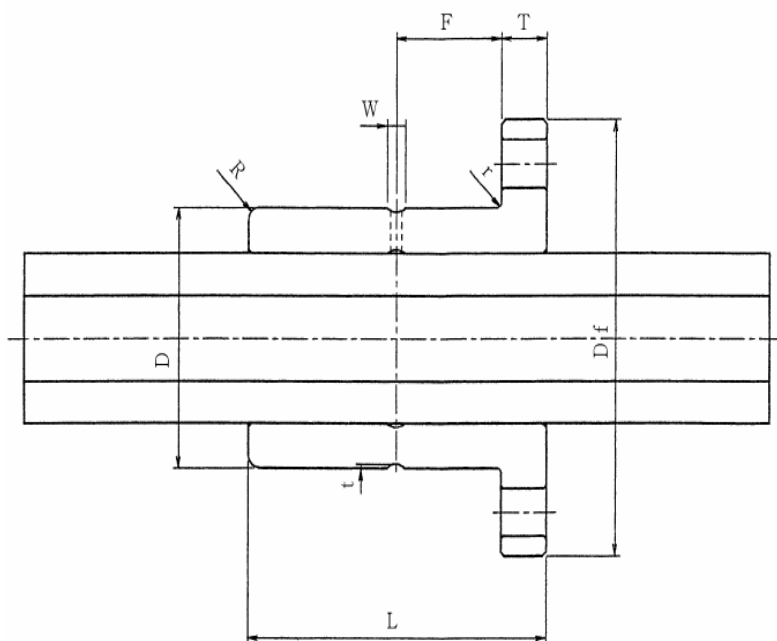


**Table 231 : HTF-P series Dimensions**

Nut part No.	Nut Major Dimension (mm)							
	$D_{h8}$	Df	PCD	L	R	r	T	F
<b>HTF7P</b>	14	26	20	16	0.5	0.5	3	5
<b>HTF9P</b>	18	30	24	20	0.5	0.5	4	6
<b>HTF11P</b>	21	37	29	26	1	0.5	5	8
<b>HTF13P</b>	24	40	32	30	1	0.5	5	10
<b>HTF17P</b>	30	50	40	40	1.5	0.5	6	14
<b>HTF22P</b>	36	56	46	50	1.5	0.5	8	17
<b>HTF27P</b>	44	66	55	60	2	0.5	8	22
<b>HTF32P</b>	54	76	65	70	2	0.5	10	25



S	H	W	t	Allowable torque (N · m)	Mass (Kg)	Stainless steel hexagonal shaft part No.	d	Mass (Kg/m)
3.5	1	2	0.5	0.6	0.004	<b>HT7S</b>	7	0.34
3.5	1	2	0.5	1.4	0.007	<b>HT9S</b>	9	0.56
4.5	1.5	2.5	0.5	2.6	0.013	<b>HT11S</b>	11	0.84
4.5	1.5	2.5	0.5	4.3	0.018	<b>HT13S</b>	13	1.17
5.5	1.5	2.5	0.5	10.0	0.036	<b>HT17S</b>	17	2.00
5.5	2	3	0.5	22.0	0.058	<b>HT22S</b>	22	3.35
6.6	2	3	0.5	39.0	0.097	<b>HT27S</b>	27	5.05
6.6	2.5	4	0.5	64.0	0.170	<b>HT32S</b>	32	7.10