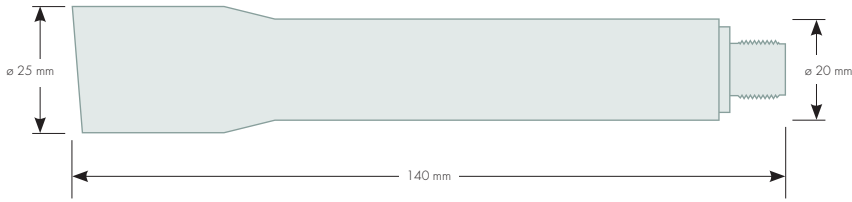
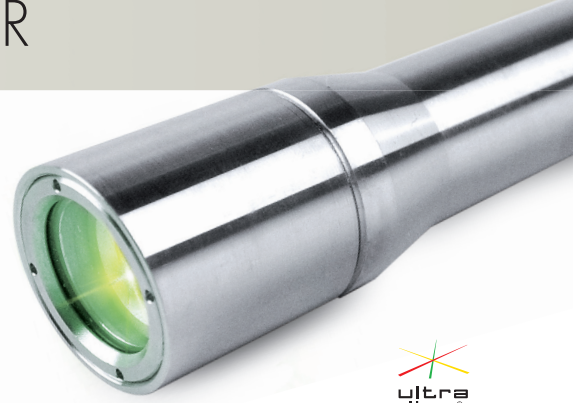


DATA SHEET HD GREEN LASER



FEATURES

- Focusable
- Point, Line, Cross
- „Heavy Duty“, extremely robust
- Protected from voltage variations, Reverse polarity protected

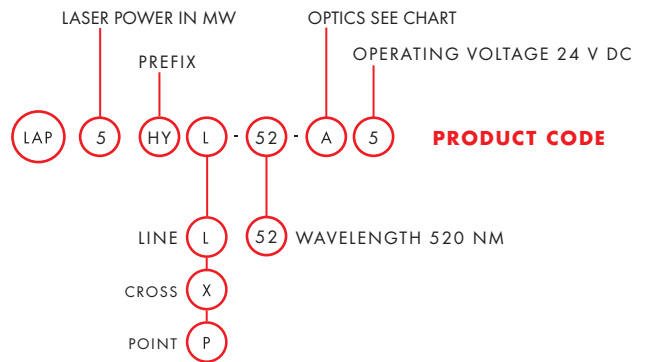
TECHNICAL DATA

Laser type/Laser colour	diode/green
Wavelength	520 nm
Output power	1 ... 40 mW
Divergence	0,5 mrad
Focus adjustment	manually, without tools
Operating Voltage	12 ... 30 V DC
Power consumptions	< 200 mA
Enclosure rating	IP 67
Dimensions/Weight	L: 140 mm × ø 25 mm (front); 20 mm (back)/ 220 g
Power connector	M12, 4-core
Application conditions	-10 ... +40 °C, 35 ... 90 % rel. humidity, non condensing
MTTF	> 30.000 h at 25 °C

NEW!
LASTS LONGER

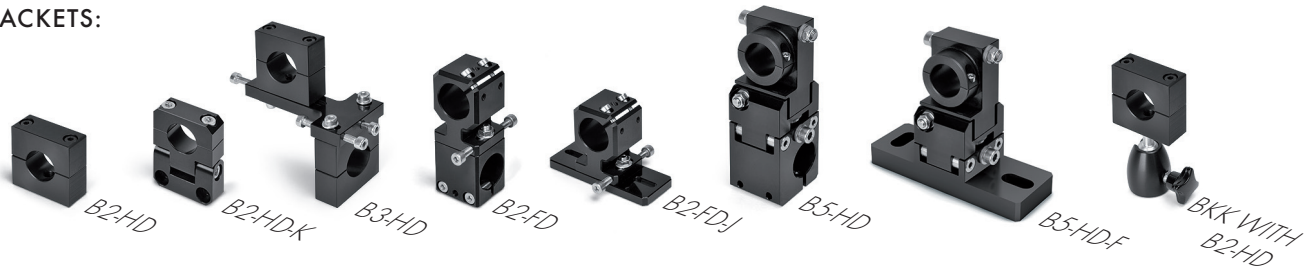
OPTICS

Type	Beam type	Opening angle
A	Line	80°
B	Line	30°
C	Line	20°
D	Line	10°
E	Line	40°
K	Cross	38°
L	Cross	62°
P	Point	



ACCESSORIES:

BRACKETS:



POWER SUPPLY:



CONNECTOR:



HEATSINK:



DATA SHEET HD GREEN LASER

LINE LASERS

Models	Output power	Line length ⁽¹⁾ Optic 80°(A)	Laser class 80°(A)	40°(E)	30°(B)	20°(C)	10°(D)
LAP 1 HYL	1 mW	up to 1 m	1	1	1	1	1
LAP 3 HYL	3 mW	up to 2 m	1	1	2	2	2
LAP 5 HYL	5 mW	up to 4 m	1	2	2	2	2
LAP 10 HYL	10 mW	up to 6 m	2	2	2M	2M	2M
LAP 15 HYL	15 mW ⁽³⁾	up to 10 m	2	2M	2M	2M	3R
LAP 30 HYL	30 mW ⁽³⁾	up to 20 m	2M	3R	3R	3R	3R
LAP 40 HYL	40 mW ⁽³⁾	up to 30 m	3R	3R	3R	3R	3R

CROSSHAIR LASERS

Models	Output power	Line length ⁽¹⁾⁽²⁾ Optic 38°(K)/62°(L)	Laser class 38°(K) 62°(L)
LAP 1 HYX	1 mW	60 cm/90 cm	1 1
LAP 3 HYX	3 mW	60 cm/90 cm	1 1
LAP 5 HYX	5 mW	60 cm/90 cm	1 2
LAP 10 HYX	10 mW	60 cm/90 cm	2 2
LAP 15 HYX	15 mW ⁽³⁾	60 cm/90 cm	2 2
LAP 30 HYX	30 mW ⁽³⁾	60 cm/90 cm	2M 2M
LAP 40 HYX	40 mW ⁽³⁾	60 cm/90 cm	2M 2M

POINT LASERS

Models	Output power	Laser class
LAP 1 HYP	1 mW	2
LAP 3 HYP	3 mW	3R
LAP 5 HYP	5 mW	3R
LAP 10 HYP	10 mW	3B
LAP 15 HYP	15 mW ⁽³⁾	3B
LAP 30 HYP	30 mW ⁽³⁾	3B
LAP 40 HYP	40 mW ⁽³⁾	3B

⁽¹⁾standard optics, line length depends on ambient light, height above surface, angle

⁽²⁾here: in 1 m distance, projection surface perpendicular to laser

⁽³⁾LAP bracket or heatsink required

LAP GmbH

Laser Applikationen

Zeppelinstrasse 23

21337 Lueneburg

Germany

Phone +49 4131 9511-95

Fax +49 4131 9511-96

Email info@lap-laser.com

